

THE LEIGHFIELD

PLOTS 537, 547, 548 & 571

THREE BEDROOM HOME

Ashberry
Homes

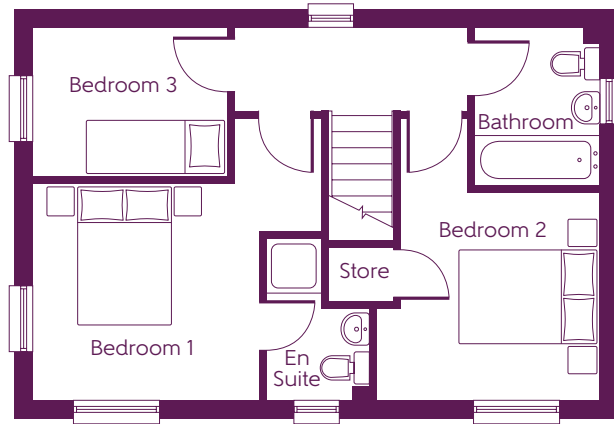


Bellway Homes Limited (East Midlands Division)
3 Romulus Court, Meridian East, Meridian Business Park,
Braunstone Town, Leicester LE19 1YG

Telephone: 0116 282 0408
www.ashberryhomes.co.uk

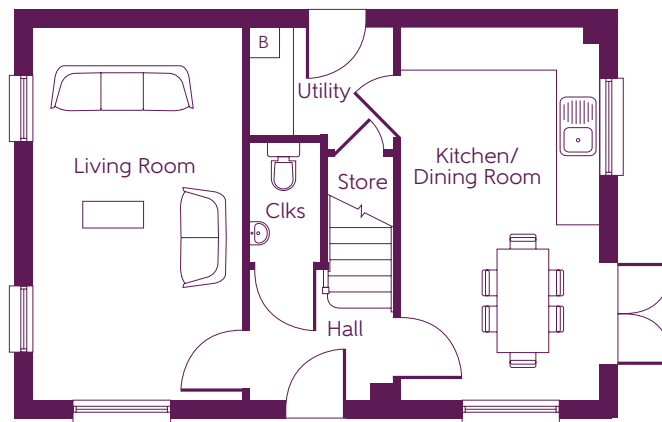
The Leighfield

THREE BEDROOM HOME



First Floor

Bedroom 1	4.008m x 3.921m <small>(max) (max)</small>	13'2" x 12'10" <small>(max) (max)</small>
Bedroom 2	3.921m x 3.116m <small>(max) (max)</small>	12'10" x 10'3" <small>(max) (max)</small>
Bedroom 3	2.700m x 2.075m	8'10" x 6'10"



Ground Floor

Kitchen/Dining Room	5.185m x 2.772m	17'0" x 9'1"
Living Room	5.185m x 2.913m	17'0" x 9'7"

**Window dimensions and elevational treatments may vary between plots.
Please ask the Sales Advisor for details.**

B Boiler **Clks** Cloakroom

Some items shown in this key may be subject to change, and positions could vary from those indicated on this floorplan. Please refer to Sales Advisor for details of your selected plot.

Computer generated image shown. External finishes, landscaping and configuration may vary from plot to plot. Please refer to Sales Advisor for further details. All dimensions are approximate and should not be used for carpet sizes, appliance spaces or furniture. Furniture not to scale and all positions are indicative. We operate a policy of continuous improvement and individual features such as kitchen and bathroom layouts, doors, windows, garages and elevational treatments may vary from time to time. Consequently these particulars should be treated as general guidance only and do not constitute a contract, part of a contract or a warranty. 05851-08/07/24.