

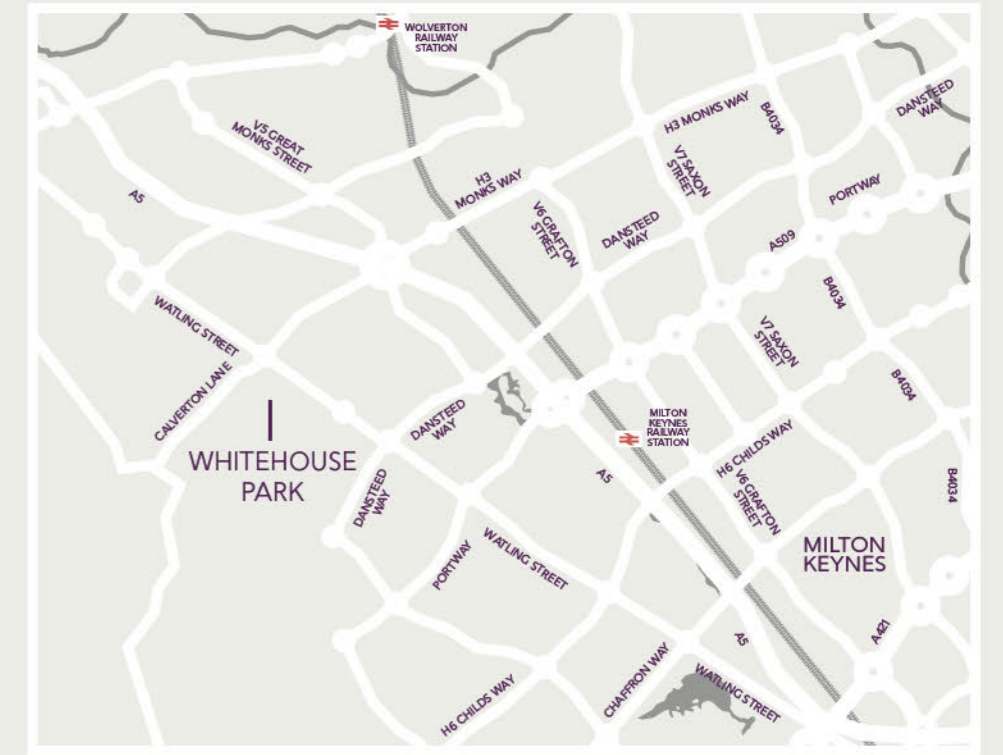


Whitehouse Park

AREA GUIDE

Ashberry
Homes

Off Watling Street, Milton Keynes, Buckinghamshire MK8 8AB Telephone: 01908 364200 ashberryhomes.co.uk



Map not to scale.

Whitehouse Park
Off Watling Street
Milton Keynes
Buckinghamshire MK8 8AB

Discover Milton Keynes.

Excellent transport links and unrivalled local amenities.

Ashberry at Whitehouse Park is a collection of 2, 3 and 4-bedroom homes in Whitehouse, on the edge of Milton Keynes. Benefitting from excellent transport links, fantastic on-site primary and secondary schools, and unrivalled local amenities, this development is ideal for all types of homebuyers, including first-time buyers, families and young professionals.

The site is just a seven minute drive from central Milton Keynes and its train station with regular routes to London Euston and Birmingham International reaching their destination in 35 and 45 minutes respectively.

Set close to the A5, Ashberry at Whitehouse Park benefits from excellent road links to nearby destinations including central Milton Keynes to the east, Northampton via the A43 and Oxford via the A34. The closest airport to the development is London Luton, around a 40 minute drive away. International and domestic flights run daily.

Residents of Whitehouse Park will be delighted with the retail options on offer. The area's premier shopping destination is Centre:MK. Home to thousands of brands and countless well-known stores, this centre is one of the most popular retail centres in the UK. From fashion and technology to homewares and luxury items, Centre:MK is perfect.

For quieter shopping, the region's independent stores are popular. Swinfen's Yard in Stony Stratford is an elegant courtyard, housing some of the area's best independent traders, including boutiques, barbers and handcrafted edible delights.



“ We had a really good experience with Ashberry and we would definitely recommend them to a friend.

Charlotte and Michael
Ashberry Homes at Pirton Fields

Given its close proximity to Milton Keynes, Ashberry at Whitehouse Park is within easy reach of outstanding leisure amenities. Beyond the local walking and cycling routes and the well-regarded Abbey Hill Golf Centre, central Milton Keynes is home to Xscape, a leisure hub featuring a cinema, a trampoline park, indoor sky diving and the Snozone. The latter is the UK's premier provider of authentic slope experiences, with provision for skiing and snowboarding for beginners, intermediates and experts.

Other activities include visits to Gulliver's Land theme park for children, trips to Silverstone for high-octane motorsport and taking in top level football at Stadium MK. Alternatively, tranquil visits to Willen Lake, Bletchley Park and Salcey Forest come highly recommended.

Families are well catered for at Whitehouse Park. On-site primary and secondary schools ensure top-tier education is available for students up to 18 years old. Just a short walk from the homeowner's front door, these schools provide the perfect foundation for students, leading them through Key Stages 1 to 4.

For further and higher education, nearby Milton Keynes is home to the Open University in its Walton Hall district, Cranfield is home to the postgraduate-exclusive Cranfield University and University Campus Milton Keynes, a campus of the University of Bedfordshire, is also found locally.





Whitehouse Park

DEVELOPMENT LAYOUT



Off Watling Street, Milton Keynes, Buckinghamshire MK8 8AB Telephone: 01908 364200 ashberryhomes.co.uk



Key to plan

- v Visitor parking
- bcp Bin collection point
- s/s Sub-station
- b/s Bin store
- c/s Cycle store

Material Finishes

- (R) - Render Version
- (WB) - Weather Boarding Version
- (CB) - Car Barn



2 Bedroom Homes

- * The Stratton
Plots 258, 259, 260, 268 & 358
- The Lavender
Plots 357, 369, 370, 371 & 372
- The Senetti
Plot 226
- The Loughton Maisonettes
Plot 425, 426, 427 & 428
- The Holm Maisonettes
Plot 423 & 424

3 Bedroom Homes

- * The Audley
Plot 267
- * The Bradwell
Plots 285 & 286
- The Cedar
Plots 250, 251, 407 & 408
- The Heather
Plots 319, 320, 377 & 378
- The Valerian
Plots 192, 193, 224, 225, 265, 266, 272, 273, 279, 280, 307, 308, 379, 380, 381 & 382
- The Orchid
Plots 219 & 440
- The Daisy
Plots 191, 201, 203, 206, 274, 318, 321 & 338
- The Sunflower
Plots 202, 261, 275, 276, 277, 312, 322, 337, 352, 356, 359, 364, 410, 436 & 439
- The Perilla
Plots 262, 264, 278, 283, 284, 293, 294, 315, 316, 323, 335, 336 & 438
- The Daffodil
Plots 188, 299, 300, 301, 302, 303, 304, 305, 339, 340, 341 & 409

4 Bedroom Homes

- The Oak
Plot 406
- The Pine
Plots 252, 253, 297, 298, 362, 363, 374, 375, 385, 386, 442 & 443
- The Jasmine
Plots 214, 215, 216, 217, 241, 242, 324, 325, 326, 365, 384, 430, 432, 433, 435, 437, 444, 447, 451 & 452
- The Campanula
Plots 220, 221, 222, 223, 239, 240, 445 & 446
- Angelica
Plots 194, 205, 211, 218, 254, 263, 306 & 353
- The Albertine
Plots 190, 195, 200, 204, 355, & 360
- The Willow
Plots 189, 281, 282, 295, 296, 313, 314, 327, 354, 361, 373, 376, 383, 396, 397, 429, 431, 434, 441 & 448
- The Camellia
Plots 197, 198, 199, 212, 213, 449 & 450

Apartments

- Caldecotte Apartments
Plots 176 - 181
- Willen Apartments
Plots 182 - 187
- * Tongwell Apartments
Plots 244 - 249
- Furzton Apartments
Plots 329 - 334
- Lodge Apartments
Plots 342 - 347
- * Kingfisher Apartments
Plots 387 - 392
- * Shenley Apartments
Plots 417 - 422

2 - 4 Bedroom Homes

- Affordable Homes
- * Discount Market Value

The site plan is drawn to show the relative position of individual properties. NOT TO SCALE. This is a two dimensional drawing and will not show land contours and gradients, boundary treatments, landscaping or local authority street lighting. Footpaths subject to change. For details of individual properties and availability please refer to our Sales Advisor.



ashberrymhomes.co.uk

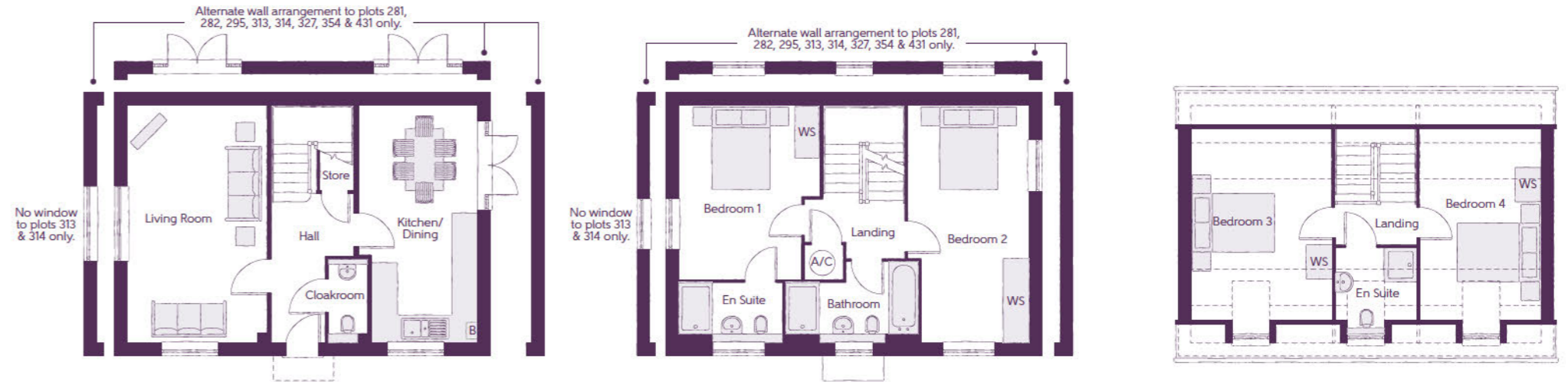
The Willow

4 BEDROOM HOME



The Willow

4 BEDROOM HOME



Ground Floor

Kitchen/Dining	5.64m x 2.81m (max)	18'6" x 19'2" (max)
Living Room	5.64m x 3.29m	18'6" x 10'10"
Cloakroom	1.97m x 0.91m	6'6" x 3'0"

First Floor

Bedroom 1	4.11m x 3.33m (max)	13'6" x 11'0" (max)
Bedroom 1 En Suite	2.44m x 1.43m	8'1" x 4'8"
Bedroom 2	5.64m x 2.87m (max)	18'6" x 9'5" (max)
Bathroom	3.17m x 1.92m (max)	10'5" x 6'4" (max)

Second Floor

Bedroom 3	4.60m x 3.33m (max)	15'1" x 11'10" (max)
Bedroom 4	4.60m x 2.87m (max)	15'1" x 9'5" (max)
En Suite	1.94m x 1.76m	6'4" x 5'9"

B - Boiler **WS** - Wardrobe Space (suggestion only, wardrobe not included) **A/C** - Airing Cupboard ----- Reduced Head Height

Furniture arrangements are for illustrative purposes only. Items are not included, nor to scale.

The items shown in this key may be subject to change, and positions could vary from those indicated on this floorplan. Please refer to Sales Advisor for details of your selected plot. Computer generated image shown overleaf. External finishes, landscaping and configuration may vary from plot to plot. Please refer to Sales Advisor for further details. All dimensions are approximate and should not be used for carpet sizes, appliance spaces or furniture. We operate a policy of continuous improvement and individual features such as kitchen and bathroom layouts, doors, windows, garages and elevational treatments may vary from time to time. Consequently these particulars should be treated as general guidance only and do not constitute a contract, part of a contract or a warranty.



ashberrymhomes.co.uk

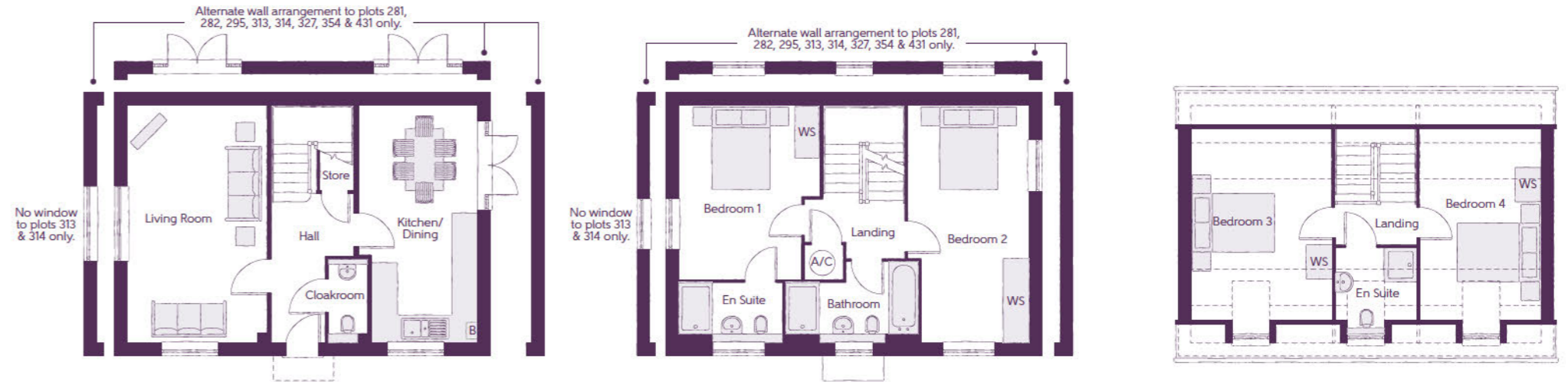
The Willow

4 BEDROOM HOME



The Willow

4 BEDROOM HOME



Ground Floor

Kitchen/Dining	5.64m x 2.81m (max)	18'6" x 19'2" (max)
Living Room	5.64m x 3.29m	18'6" x 10'10"
Cloakroom	1.97m x 0.91m	6'6" x 3'0"

First Floor

Bedroom 1	4.11m x 3.33m (max)	13'6" x 11'0" (max)
Bedroom 1 En Suite	2.44m x 1.43m	8'1" x 4'8"
Bedroom 2	5.64m x 2.87m (max)	18'6" x 9'5" (max)
Bathroom	3.17m x 1.92m (max)	10'5" x 6'4" (max)

Second Floor

Bedroom 3	4.60m x 3.33m (max)	15'1" x 11'10" (max)
Bedroom 4	4.60m x 2.87m (max)	15'1" x 9'5" (max)
En Suite	1.94m x 1.76m	6'4" x 5'9"

B - Boiler **WS** - Wardrobe Space (suggestion only, wardrobe not included) **A/C** - Airing Cupboard - - - - - Reduced Head Height

Furniture arrangements are for illustrative purposes only. Items are not included, nor to scale.

The items shown in this key may be subject to change, and positions could vary from those indicated on this floorplan. Please refer to Sales Advisor for details of your selected plot. Computer generated image shown overleaf. External finishes, landscaping and configuration may vary from plot to plot. Please refer to Sales Advisor for further details. All dimensions are approximate and should not be used for carpet sizes, appliance spaces or furniture. We operate a policy of continuous improvement and individual features such as kitchen and bathroom layouts, doors, windows, garages and elevational treatments may vary from time to time. Consequently these particulars should be treated as general guidance only and do not constitute a contract, part of a contract or a warranty.



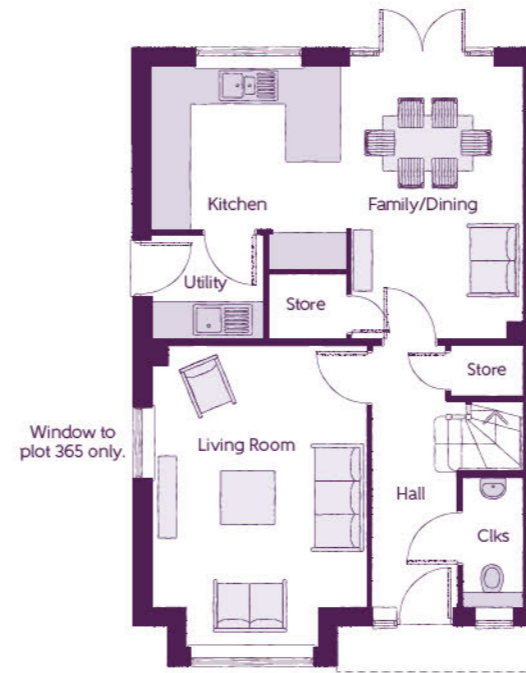
ashberrymhomes.co.uk

The Jasmine

4 BEDROOM HOME

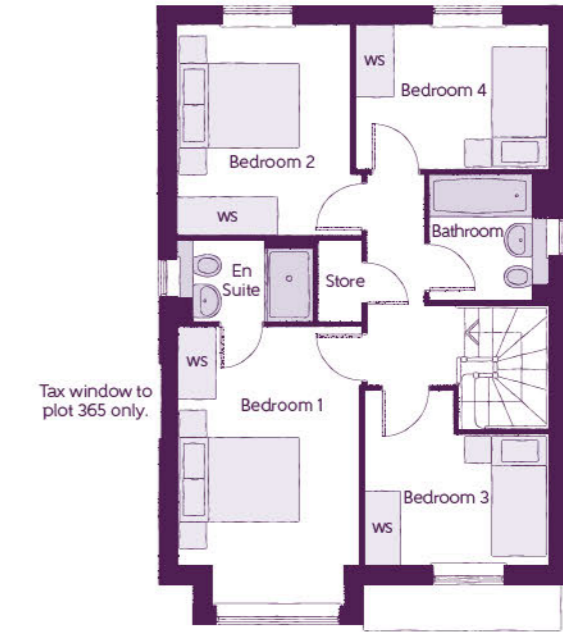
The Jasmine

4 BEDROOM HOME



Ground Floor

Kitchen	3.20m x 2.68m	10'6" x 8'10"
Family/Dining	4.48m x 2.88m (max)	14'8" x 9'6" (max)
Living Room	4.94m x 3.54m (inc. bay)	16'3" x 11'7" (inc. bay)
Utility	1.84m x 1.71m	6'0" x 5'7"
Cloakroom	2.13m x 0.97m	7'0" x 3'2"



First Floor

Bedroom 1	4.59m x 2.96m (inc. bay)	15'1" x 9'9" (inc. bay)
Bedroom 1 En Suite	2.22m x 1.33m	7'3" x 4'4"
Bedroom 2	3.46m x 3.03m (max)	11'4" x 9'11" (max)
Bedroom 3	2.97m x 2.87m (max)	9'9" x 9'5" (max)
Bedroom 4	3.17m x 2.38m	10'5" x 7'10"
Bathroom	2.07m x 1.91m	6'8" x 6'3"

Clks - Cloakroom WS - Wardrobe Space (suggestion only, wardrobe not included)

Furniture arrangements are for illustrative purposes only. Items are not included, nor to scale.

The items shown in this key may be subject to change, and positions could vary from those indicated on this floorplan. Please refer to Sales Advisor for details of your selected plot. Computer generated image shown overleaf. External finishes, landscaping and configuration may vary from plot to plot. Please refer to Sales Advisor for further details. All dimensions are approximate and should not be used for carpet sizes, appliance spaces or furniture. We operate a policy of continuous improvement and individual features such as kitchen and bathroom layouts, doors, windows, garages and elevational treatments may vary from time to time. Consequently these particulars should be treated as general guidance only and do not constitute a contract, part of a contract or a warranty.





ashberrymhomes.co.uk

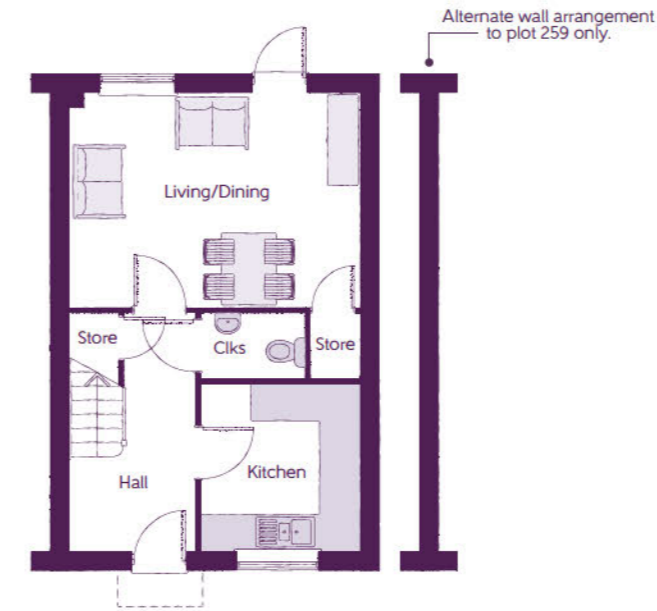
The Stratton

2 BEDROOM HOME



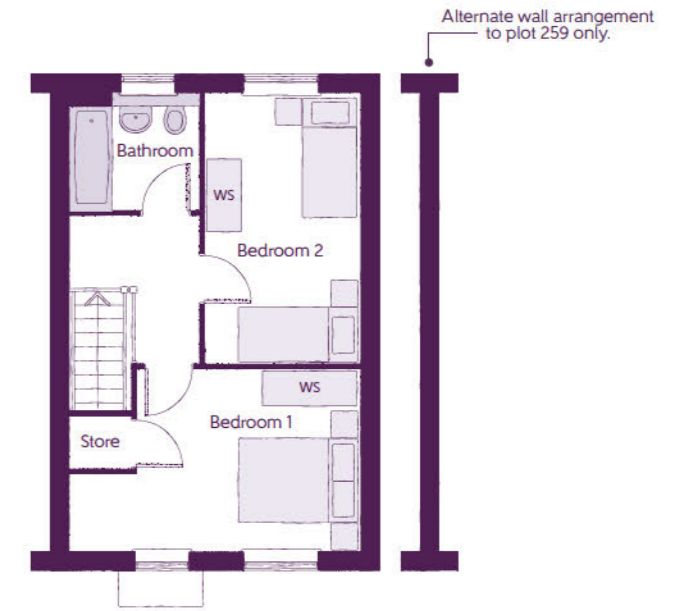
The Stratton

2 BEDROOM HOME



Ground Floor

Kitchen	2.75m x 2.62m	9'0" x 8'7"
Living/Dining	4.78m x 3.53m	15'8" x 11'7"
Cloakroom	1.72m x 1.08m	5'8" x 3'7"



First Floor

Bedroom 1	4.78m x 3.00m (max) (max)	15'8" x 9'10" (max) (max)
Bedroom 2	4.46m x 2.56m	14'8" x 8'5"
Bathroom	2.13m x 1.93m	7'0" x 6'4"

Clks - Cloakroom WS - Wardrobe Space (suggestion only, wardrobe not included)

Furniture arrangements are for illustrative purposes only. Items are not included, nor to scale.

The items shown in this key may be subject to change, and positions could vary from those indicated on this floorplan. Please refer to Sales Advisor for details of your selected plot. Computer generated image shown overleaf. External finishes, landscaping and configuration may vary from plot to plot. Please refer to Sales Advisor for further details. All dimensions are approximate and should not be used for carpet sizes, appliance spaces or furniture. We operate a policy of continuous improvement and individual features such as kitchen and bathroom layouts, doors, windows, garages and elevational treatments may vary from time to time. Consequently these particulars should be treated as general guidance only and do not constitute a contract, part of a contract or a warranty.



ashberrymhomes.co.uk

The Campanula

4 BEDROOM HOME



The Campanula

4 BEDROOM HOME



Ground Floor

Kitchen	3.17m x 2.50m	10'5" x 8'2"
Living/Dining	6.26m x 4.67m (max) (max)	20'7" x 15'4" (max) (max)
Cloakroom	1.90m x 0.93m	6'3" x 3'1"

First Floor

Bedroom 1	4.67m x 3.37m (max) (max)	15'4" x 11'1" (max) (max)
Bedroom 1 En Suite	2.15m x 1.45m	7'1" x 4'9"
Bedroom 3	3.46m x 2.38m	11'4" x 7'10"
Bathroom	2.20m x 1.90m	7'3" x 6'3"

Second Floor

Bedroom 2	4.67m x 3.73m	15'4" x 12'3"
Bedroom 4	3.95m x 2.25m (max) (max)	13'0" x 7'5" (max) (max)
Shower	2.33m x 2.27m	7'8" x 7'5"

Clks - Cloakroom WS - Wardrobe Space (suggestion only, wardrobe not included) RW - Roof Window - - - - Reduced Head Height

Furniture arrangements are for illustrative purposes only. Items are not included, nor to scale.

The items shown in this key may be subject to change, and positions could vary from those indicated on this floorplan. Please refer to Sales Advisor for details of your selected plot. Computer generated image shown overleaf. External finishes, landscaping and configuration may vary from plot to plot. Please refer to Sales Advisor for further details. All dimensions are approximate and should not be used for carpet sizes, appliance spaces or furniture. We operate a policy of continuous improvement and individual features such as kitchen and bathroom layouts, doors, windows, garages and elevational treatments may vary from time to time. Consequently these particulars should be treated as general guidance only and do not constitute a contract, part of a contract or a warranty.



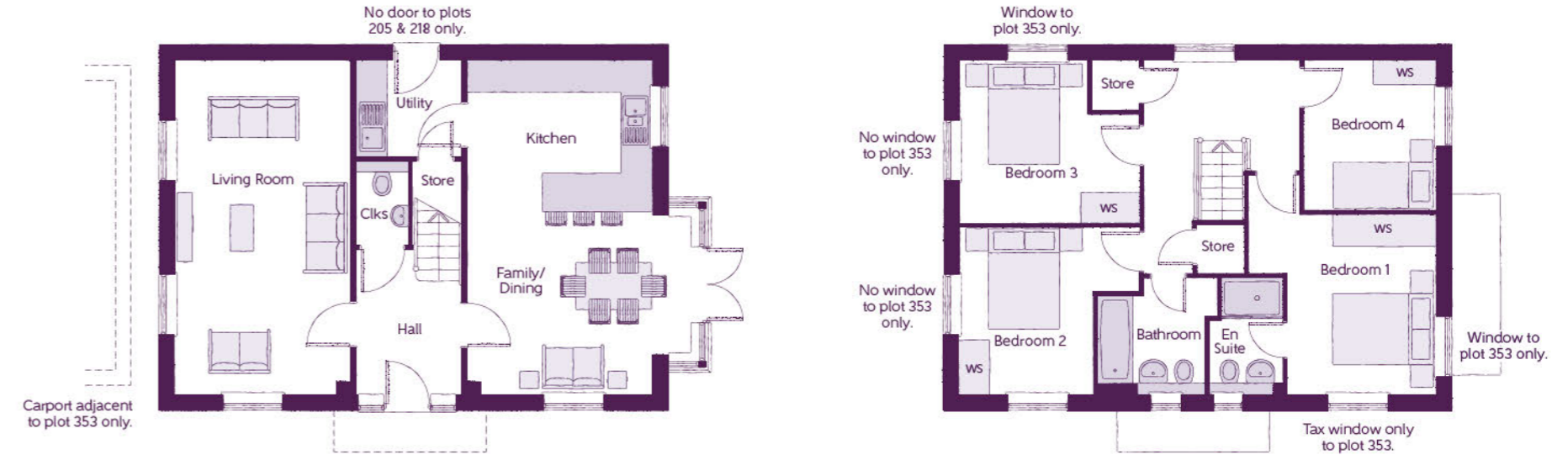
The Angelica

4 BEDROOM HOME

ashberrymhomes.co.uk

The Angelica

4 BEDROOM HOME



Ground Floor

Kitchen	3.60m x 3.04m	11'10" x 10'0"
Family/Dining	4.39m x 3.50m (inc. bay)	14'5" x 11'6" (inc. bay)
Living Room	6.54m x 3.42m	21'5" x 11'3"
Utility	2.03m x 1.87m	6'8" x 6'2"
Cloakroom	1.65m x 1.00m	5'5" x 3'3"

First Floor

Bedroom 1	4.29m x 3.66m (max) (max)	14'1" x 12'0" (max) (max)
Bedroom 1 En Suite	2.25m x 1.44m	7'5" x 4'9"
Bedroom 2	3.53m x 3.27m (max)	11'7" x 10'9" (max)
Bedroom 3	3.53m x 3.18m (max)	11'7" x 10'5" (max)
Bedroom 4	2.93m x 2.58m	9'7" x 8'6"
Bathroom	2.35m x 2.25m (max)	7'9" x 7'5" (max)

Clks - Cloakroom WS - Wardrobe Space (suggestion only, wardrobe not included)

Furniture arrangements are for illustrative purposes only. Items are not included, nor to scale.

The items shown in this key may be subject to change, and positions could vary from those indicated on this floorplan. Please refer to Sales Advisor for details of your selected plot. Computer generated image shown overleaf. External finishes, landscaping and configuration may vary from plot to plot. Please refer to Sales Advisor for further details. All dimensions are approximate and should not be used for carpet sizes, appliance spaces or furniture. We operate a policy of continuous improvement and individual features such as kitchen and bathroom layouts, doors, windows, garages and elevational treatments may vary from time to time. Consequently these particulars should be treated as general guidance only and do not constitute a contract, part of a contract or a warranty.



The Angelica

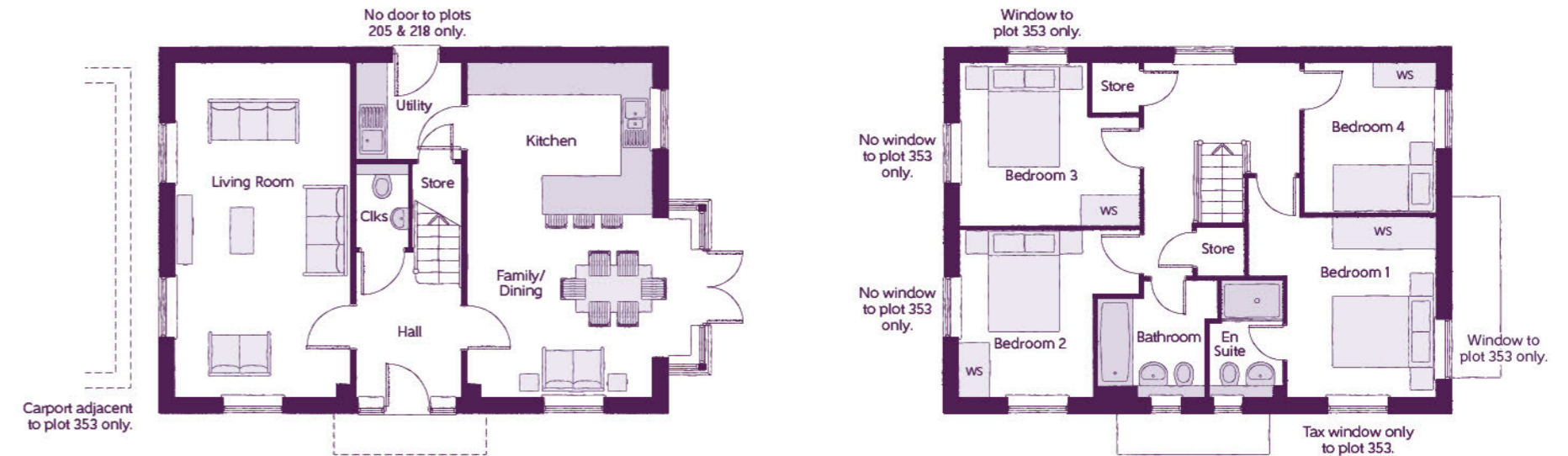
4 BEDROOM HOME

ashberrymhomes.co.uk

Ashberry
Homes

The Angelica

4 BEDROOM HOME



Ground Floor

Kitchen	3.60m x 3.04m	11'10" x 10'0"
Family/Dining	4.39m x 3.50m (inc. bay)	14'5" x 11'6" (inc. bay)
Living Room	6.54m x 3.42m	21'5" x 11'3"
Utility	2.03m x 1.87m	6'8" x 6'2"
Cloakroom	1.65m x 1.00m	5'5" x 3'3"

First Floor

Bedroom 1	4.29m x 3.66m (max) (max)	14'1" x 12'0" (max) (max)
Bedroom 1 En Suite	2.25m x 1.44m	7'5" x 4'9"
Bedroom 2	3.53m x 3.27m (max)	11'7" x 10'9" (max)
Bedroom 3	3.53m x 3.18m (max)	11'7" x 10'5" (max)
Bedroom 4	2.93m x 2.58m	9'7" x 8'6"
Bathroom	2.35m x 2.25m (max)	7'9" x 7'5" (max)

Clks - Cloakroom WS - Wardrobe Space (suggestion only, wardrobe not included)

Furniture arrangements are for illustrative purposes only. Items are not included, nor to scale.

The items shown in this key may be subject to change, and positions could vary from those indicated on this floorplan. Please refer to Sales Advisor for details of your selected plot. Computer generated image shown overleaf. External finishes, landscaping and configuration may vary from plot to plot. Please refer to Sales Advisor for further details. All dimensions are approximate and should not be used for carpet sizes, appliance spaces or furniture. We operate a policy of continuous improvement and individual features such as kitchen and bathroom layouts, doors, windows, garages and elevational treatments may vary from time to time. Consequently these particulars should be treated as general guidance only and do not constitute a contract, part of a contract or a warranty.



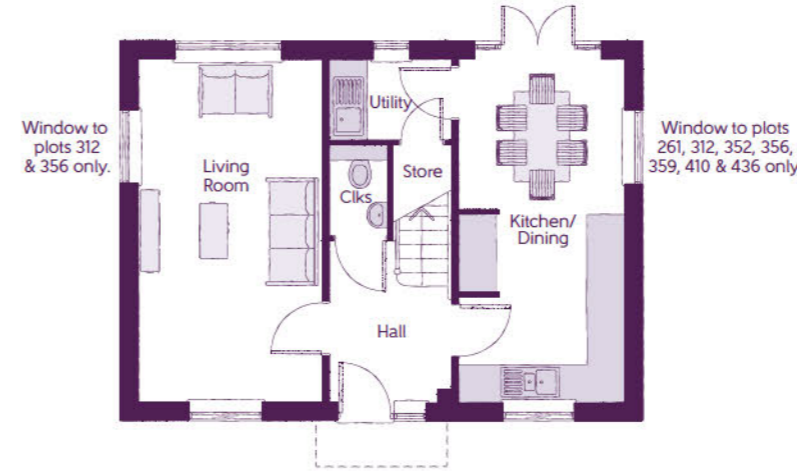
ashberrymhomes.co.uk

The Sunflower

3 BEDROOM HOME

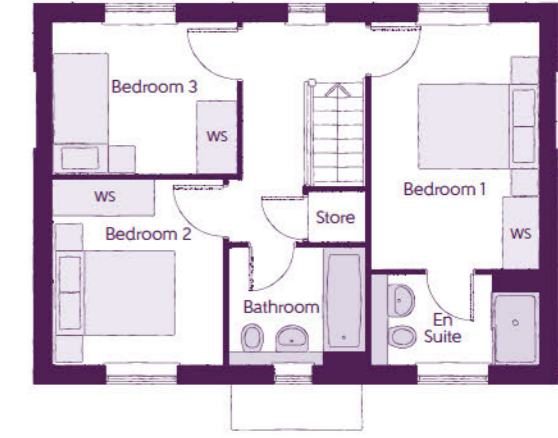
The Sunflower

3 BEDROOM HOME



Ground Floor

Kitchen/Dining	5.64m x 2.71m	18'6" x 8'11"
Living Room	5.64m x 3.01m	18'6" x 9'10"
Utility	1.98m x 1.32m	6'6" x 4'4"
Cloakroom	1.65m x 0.95m	5'5" x 3'1"



First Floor

Bedroom 1	4.07m x 2.77m	13'4" x 9'1"
Bedroom 1 En Suite	2.77m x 1.48m	9'1" x 4'10"
Bedroom 2	3.07m x 2.79m	10'1" x 9'2"
Bedroom 3	3.03m x 2.48m	9'11" x 8'2"
Bathroom	2.26m x 1.92m	7'5" x 6'4"

Clks - Cloakroom WS - Wardrobe Space (suggestion only, wardrobe not included)

Furniture arrangements are for illustrative purposes only. Items are not included, nor to scale.

The items shown in this key may be subject to change, and positions could vary from those indicated on this floorplan. Please refer to Sales Advisor for details of your selected plot. Computer generated image shown overleaf. External finishes, landscaping and configuration may vary from plot to plot. Please refer to Sales Advisor for further details. All dimensions are approximate and should not be used for carpet sizes, appliance spaces or furniture. We operate a policy of continuous improvement and individual features such as kitchen and bathroom layouts, doors, windows, garages and elevational treatments may vary from time to time. Consequently these particulars should be treated as general guidance only and do not constitute a contract, part of a contract or a warranty.

Ashberry
Homes



ashberrymhomes.co.uk

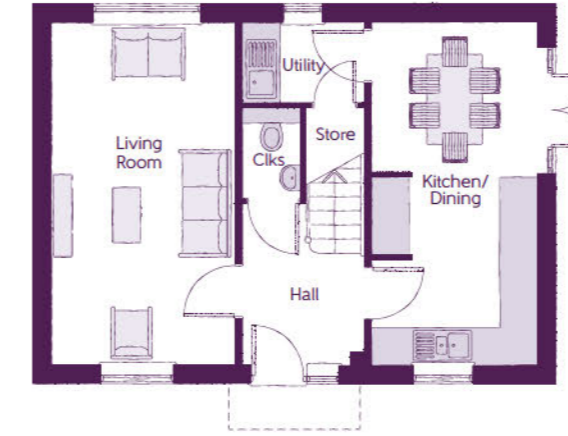
The Daisy

3 BEDROOM HOME



The Daisy

3 BEDROOM HOME



Ground Floor

Kitchen/Dining	5.64m x 2.71m	18'6" x 8'11"
Living Room	5.64m x 3.01m	18'6" x 9'10"
Utility	1.98m x 1.32m	6'6" x 4'4"
Cloakroom	1.65m x 0.95m	5'5" x 3'1"

*Plot 338 only.



First Floor

Bedroom 1	4.07m x 2.77m	13'4" x 9'1"
Bedroom 1 En Suite	2.77m x 1.48m	9'1" x 4'10"
Bedroom 2	3.07m x 2.79m	10'1" x 9'2"
Bedroom 3	3.03 m x 2.48m	9'11" x 8'2"
Bathroom	2.26m x 1.92m	7'5" x 6'4"

Clks - Cloakroom WS - Wardrobe Space (suggestion only, wardrobe not included)

Furniture arrangements are for illustrative purposes only. Items are not included, nor to scale.

The items shown in this key may be subject to change, and positions could vary from those indicated on this floorplan. Please refer to Sales Advisor for details of your selected plot. Computer generated image shown overleaf. External finishes, landscaping and configuration may vary from plot to plot. Please refer to Sales Advisor for further details. All dimensions are approximate and should not be used for carpet sizes, appliance spaces or furniture. We operate a policy of continuous improvement and individual features such as kitchen and bathroom layouts, doors, windows, garages and elevational treatments may vary from time to time. Consequently these particulars should be treated as general guidance only and do not constitute a contract, part of a contract or a warranty.



ashberrymhomes.co.uk

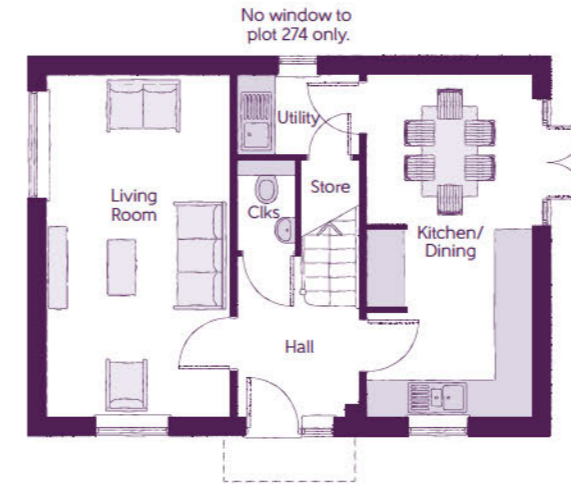
The Daisy

3 BEDROOM HOME



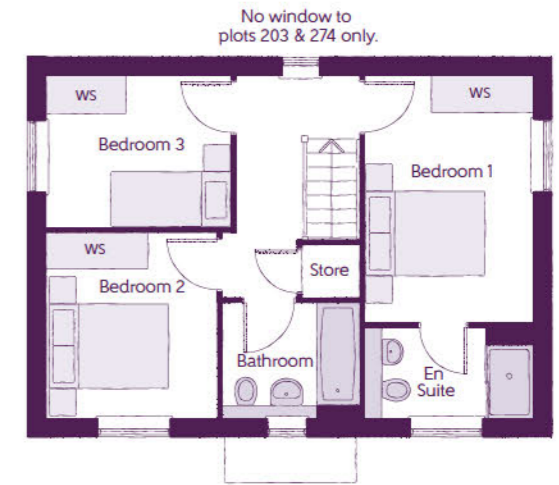
The Daisy

3 BEDROOM HOME



Ground Floor

Kitchen/Dining	5.64m x 2.71m	18'6" x 8'11"
Living Room	5.64m x 3.01m	18'6" x 9'10"
Utility	1.98m x 1.32m	6'6" x 4'4"
Cloakroom	1.65m x 0.95m	5'5" x 3'1"



First Floor

Bedroom 1	4.07m x 2.77m	13'4" x 9'1"
Bedroom 1 En Suite	2.77m x 1.48m	9'1" x 4'10"
Bedroom 2	3.07m x 2.79m	10'1" x 9'2"
Bedroom 3	3.03 m x 2.48m	9'11" x 8'2"
Bathroom	2.26m x 1.92m	7'5" x 6'4"

Clks - Cloakroom WS - Wardrobe Space (suggestion only, wardrobe not included)

Furniture arrangements are for illustrative purposes only. Items are not included, nor to scale.

The items shown in this key may be subject to change, and positions could vary from those indicated on this floorplan. Please refer to Sales Advisor for details of your selected plot. Computer generated image shown overleaf. External finishes, landscaping and configuration may vary from plot to plot. Please refer to Sales Advisor for further details. All dimensions are approximate and should not be used for carpet sizes, appliance spaces or furniture. We operate a policy of continuous improvement and individual features such as kitchen and bathroom layouts, doors, windows, garages and elevational treatments may vary from time to time. Consequently these particulars should be treated as general guidance only and do not constitute a contract, part of a contract or a warranty.



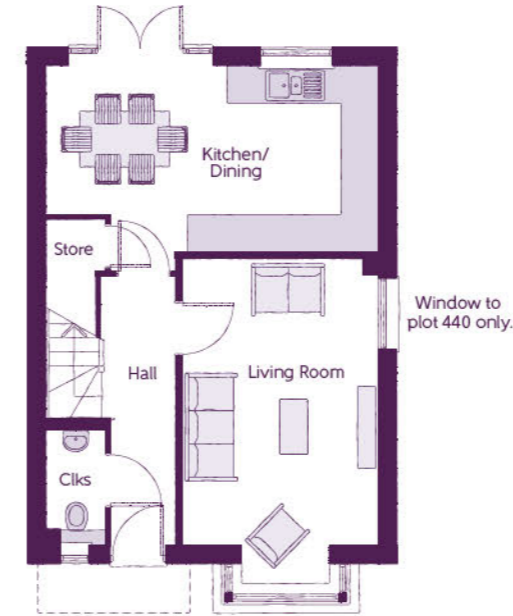
ashberrymhomes.co.uk

The Orchid

3 BEDROOM HOME

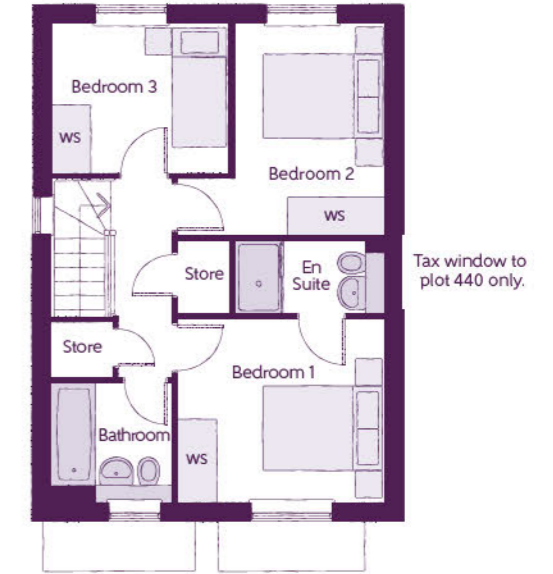
The Orchid

3 BEDROOM HOME



Ground Floor

Kitchen/Dining	5.46m x 3.05m	17'11" x 10'0"
Living Room	5.36m x 3.22m (inc. bay)	17'7" x 10'7" (inc. bay)
Cloakroom	1.92m x 0.95m	6'4" x 3'1"



First Floor

Bedroom 1	3.40m x 3.02m	11'2" x 9'11"
Bedroom 1 En Suite	2.44m x 1.19m	8'0" x 3'11"
Bedroom 2	3.50m x 3.40m (max)	11'6" x 11'2" (max)
Bedroom 3	2.88m x 2.47m	11'2" x 8'1"
Bathroom	1.96m x 1.96m	6'5" x 6'5"

Clks - Cloakroom WS - Wardrobe Space (suggestion only, wardrobe not included)

Furniture arrangements are for illustrative purposes only. Items are not included, nor to scale.

The items shown in this key may be subject to change, and positions could vary from those indicated on this floorplan. Please refer to Sales Advisor for details of your selected plot. Computer generated image shown overleaf. External finishes, landscaping and configuration may vary from plot to plot. Please refer to Sales Advisor for further details. All dimensions are approximate and should not be used for carpet sizes, appliance spaces or furniture. We operate a policy of continuous improvement and individual features such as kitchen and bathroom layouts, doors, windows, garages and elevational treatments may vary from time to time. Consequently these particulars should be treated as general guidance only and do not constitute a contract, part of a contract or a warranty.





The Lavender

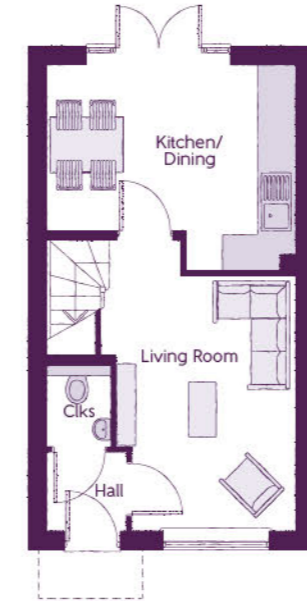
2 BEDROOM HOME

ashberrymhomes.co.uk

Ashberry
Homes

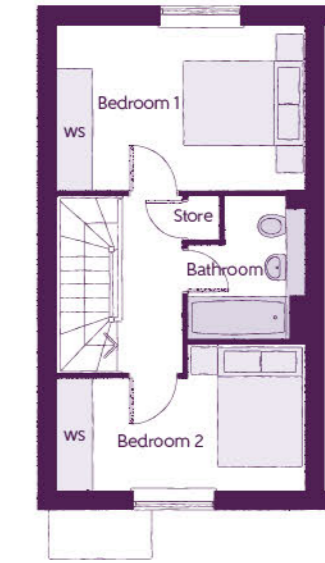
The Lavender

2 BEDROOM HOME



Ground Floor

Kitchen/Dining	4.05m x 3.38m (max)	13'3" x 11'1" (max)
Living Room	2.95m x 4.85m (max) (max)	9'8" x 15'11" (max) (max)
Cloakroom	1.01m x 1.50m	3'4" x 4'11"



First Floor

Bedroom 1	4.05m x 2.72m	13'3" x 8'11"
Bedroom 2	4.05m x 2.40m (max)	13'3" x 7'10" (max)
Bathroom	1.91m x 2.36m	6'3" x 7'9"

Clks - Cloakroom WS - Wardrobe Space (suggestion only, wardrobe not included)

Furniture arrangements are for illustrative purposes only. Items are not included, nor to scale.

The items shown in this key may be subject to change, and positions could vary from those indicated on this floorplan. Please refer to Sales Advisor for details of your selected plot. Computer generated image shown overleaf. External finishes, landscaping and configuration may vary from plot to plot. Please refer to Sales Advisor for further details. All dimensions are approximate and should not be used for carpet sizes, appliance spaces or furniture. We operate a policy of continuous improvement and individual features such as kitchen and bathroom layouts, doors, windows, garages and elevational treatments may vary from time to time. Consequently these particulars should be treated as general guidance only and do not constitute a contract, part of a contract or a warranty.



ashberrymhomes.co.uk

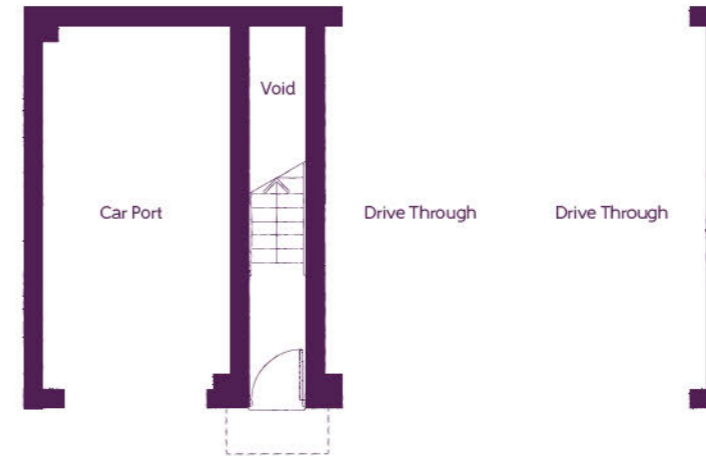
The Senetti

2 BEDROOM HOME



The Senetti

2 BEDROOM HOME



Ground Floor

Important note: The Senetti is allocated a car port. Please refer to the Sales Advisor for further information.



First Floor

Kitchen/Dining	4.28m x 3.08m <small>(max) (max)</small>	14'0" x 10'1" <small>(max) (max)</small>
Living	3.44m x 3.29m	11'3" x 10'10"
Bedroom 1	3.98m x 3.29m <small>(max)</small>	13'1" x 10'10" <small>(max)</small>
Bedroom 1 En Suite	2.20m x 1.46m	7'3" x 4'9"
Bedroom 2	3.96m x 2.59m	13'0" x 8'6"
Bathroom	2.20m x 1.91m	7'2" x 6'3"

Clks - Cloakroom WS - Wardrobe Space (suggestion only, wardrobe not included)

Furniture arrangements are for illustrative purposes only. Items are not included, nor to scale.

The items shown in this key may be subject to change, and positions could vary from those indicated on this floorplan. Please refer to Sales Advisor for details of your selected plot. Computer generated image shown overleaf. External finishes, landscaping and configuration may vary from plot to plot. Please refer to Sales Advisor for further details. All dimensions are approximate and should not be used for carpet sizes, appliance spaces or furniture. We operate a policy of continuous improvement and individual features such as kitchen and bathroom layouts, doors, windows, garages and elevational treatments may vary from time to time. Consequently these particulars should be treated as general guidance only and do not constitute a contract, part of a contract or a warranty.



ashberrymhomes.co.uk

The Holm Maisonettes

PLOTS 423 & 424

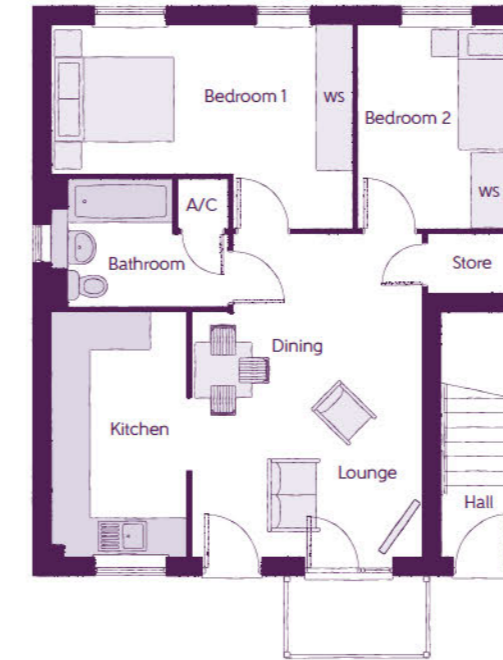
2 BEDROOM HOME

Ashberry
Homes

The Holm Maisonettes PLOTS 423 & 424

2 BEDROOM HOME

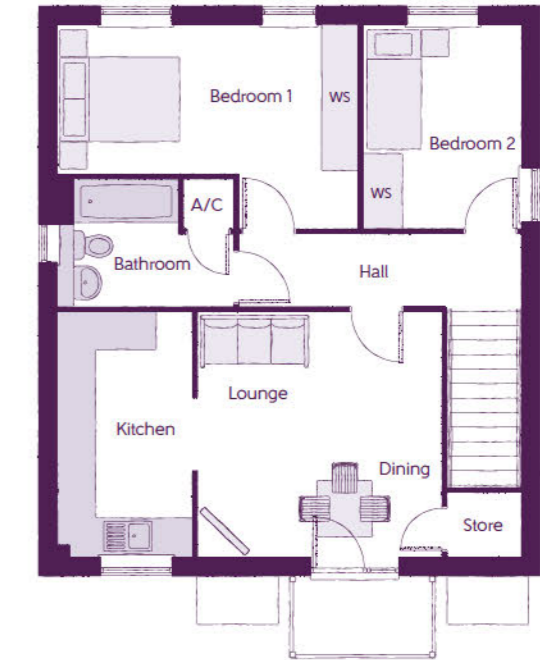
PLOT 423



Ground Floor

Kitchen	4.05m x 2.22m	13'3" x 7'3"
Living/Dining	5.34m x 3.79m (max)	17'6" x 12'5" (max)
Bedroom 1	3.37m x 4.96m (max)	11'1" x 16'3" (max)
Bedroom 2	3.37m x 2.60m	11'1" x 8'6"
Bathroom	2.90m x 2.10m (max)	9'6" x 6'11" (max)

PLOT 424



First Floor

Kitchen	4.05m x 2.22m	13'3" x 7'3"
Living/Dining	4.05m x 4.04m	13'3" x 13'2"
Bedroom 1	3.37m x 4.96m (max)	11'1" x 16'3" (max)
Bedroom 2	3.37m x 2.60m	11'1" x 8'6"
Bathroom	2.90m x 2.10m (max)	9'6" x 6'11" (max)

Clks - Cloakroom WS - Wardrobe Space (suggestion only, wardrobe not included)

Furniture arrangements are for illustrative purposes only. Items are not included, nor to scale.

The items shown in this key may be subject to change, and positions could vary from those indicated on this floorplan. Please refer to Sales Advisor for details of your selected plot. Computer generated image shown overleaf. External finishes, landscaping and configuration may vary from plot to plot. Please refer to Sales Advisor for further details. All dimensions are approximate and should not be used for carpet sizes, appliance spaces or furniture. We operate a policy of continuous improvement and individual features such as kitchen and bathroom layouts, doors, windows, garages and elevational treatments may vary from time to time. Consequently these particulars should be treated as general guidance only and do not constitute a contract, part of a contract or a warranty.



The Loughton Maisonettes

PLOTS 425 - 428

2 BEDROOM HOME

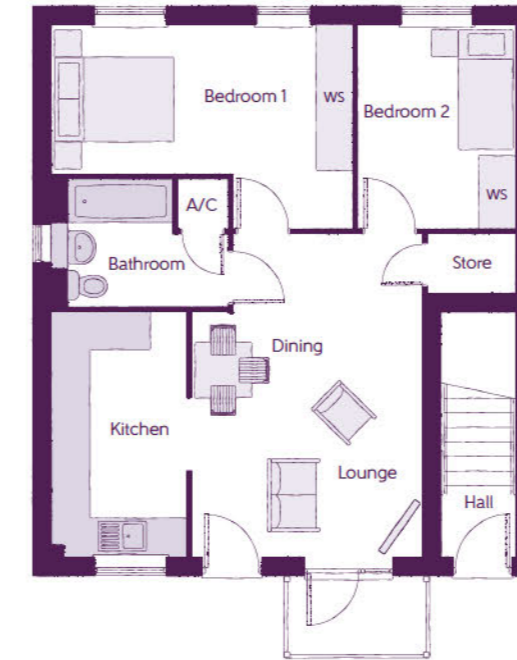
ashberrymhomes.co.uk

Ashberry
Homes

The Loughton Maisonettes PLOTS 425 - 428

2 BEDROOM HOME

PLOT 425

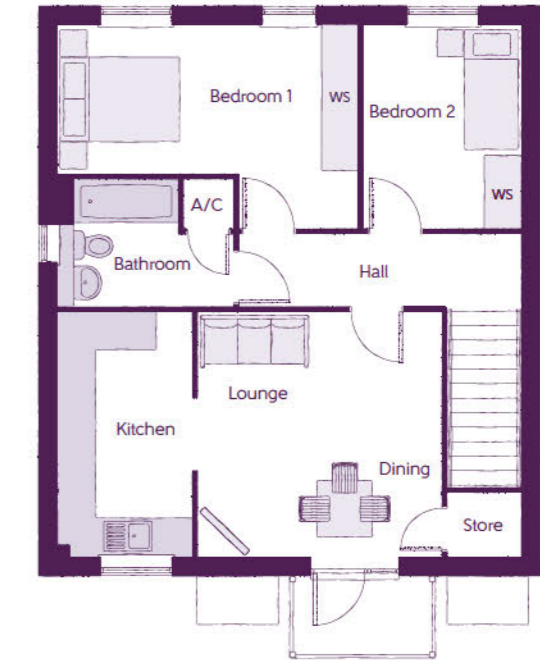


Plot 427 is handed.

Ground Floor

Kitchen	4.05m x 2.22m	13'3" x 7'3"
Living/Dining	5.34m x 3.79m (max)	17'6" x 12'5" (max)
Bedroom 1	3.37m x 4.96m (max)	11'1" x 16'3" (max)
Bedroom 2	3.37m x 2.60m	11'1" x 8'6"
Bathroom	2.90m x 2.10m (max)	9'6" x 6'11" (max)

PLOT 426



Plot 428 is handed.

First Floor

Kitchen	4.05m x 2.22m	13'3" x 7'3"
Living/Dining	4.05m x 4.04m	13'3" x 13'2"
Bedroom 1	3.37m x 4.96m (max)	11'1" x 16'3" (max)
Bedroom 2	3.37m x 2.60m	11'1" x 8'6"
Bathroom	2.90m x 2.10m (max)	9'6" x 6'11" (max)

Clks - Cloakroom WS - Wardrobe Space (suggestion only, wardrobe not included)

Furniture arrangements are for illustrative purposes only. Items are not included, nor to scale.

The items shown in this key may be subject to change, and positions could vary from those indicated on this floorplan. Please refer to Sales Advisor for details of your selected plot. Computer generated image shown overleaf. External finishes, landscaping and configuration may vary from plot to plot. Please refer to Sales Advisor for further details. All dimensions are approximate and should not be used for carpet sizes, appliance spaces or furniture. We operate a policy of continuous improvement and individual features such as kitchen and bathroom layouts, doors, windows, garages and elevational treatments may vary from time to time. Consequently these particulars should be treated as general guidance only and do not constitute a contract, part of a contract or a warranty.



ashberrymhomes.co.uk

The Heather

3 BEDROOM HOME

Ashberry
Homes

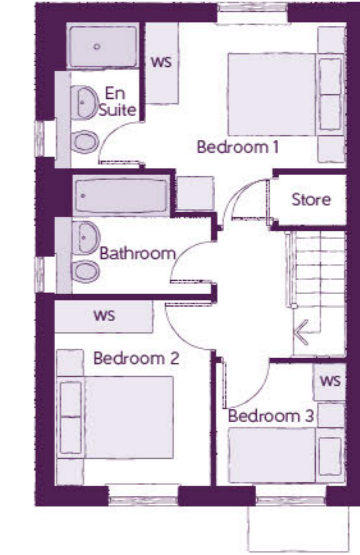
The Heather

3 BEDROOM HOME



Ground Floor

Kitchen/Dining	4.78m x 3.45m (max) (max)	15'8" x 11'4" (max) (max)
Living Room	5.14m x 3.88m (max) (max)	16'10" x 12'9" (max) (max)
Cloakroom	1.66m x 1.01m	5'5" x 3'4"



First Floor

Bedroom 1	3.35m x 3.29m (max)	11'0" x 10'10" (max)
Bedroom 1 En Suite	2.43m x 1.40m	8'0" x 4'7"
Bedroom 2	3.09m x 2.52m	10'2" x 8'3"
Bedroom 3	2.17m x 2.04m	7'1" x 6'8"
Bathroom	2.52m x 1.97m	8'3" x 6'5"

Clks - Cloakroom WS - Wardrobe Space (suggestion only, wardrobe not included)

Furniture arrangements are for illustrative purposes only. Items are not included, nor to scale.

The items shown in this key may be subject to change, and positions could vary from those indicated on this floorplan. Please refer to Sales Advisor for details of your selected plot. Computer generated image shown overleaf. External finishes, landscaping and configuration may vary from plot to plot. Please refer to Sales Advisor for further details. All dimensions are approximate and should not be used for carpet sizes, appliance spaces or furniture. We operate a policy of continuous improvement and individual features such as kitchen and bathroom layouts, doors, windows, garages and elevational treatments may vary from time to time. Consequently these particulars should be treated as general guidance only and do not constitute a contract, part of a contract or a warranty.



ashberrymhomes.co.uk

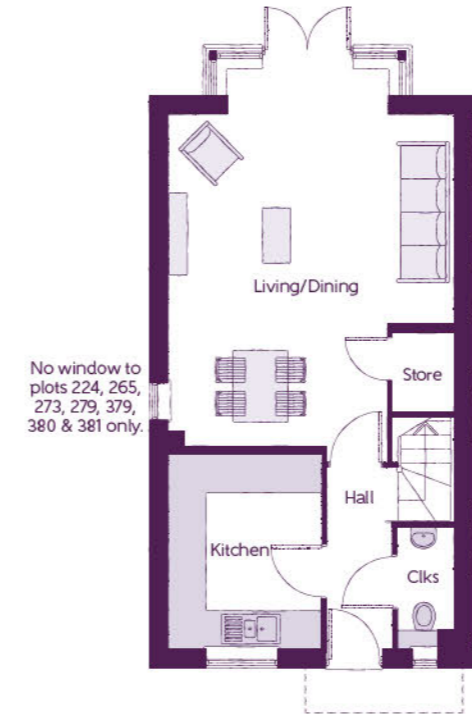
The Valerian

3 BEDROOM HOME



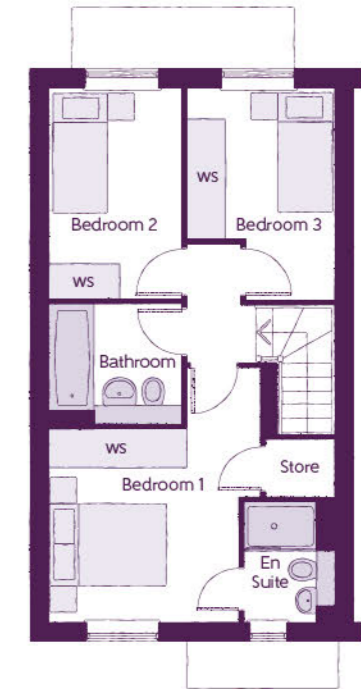
The Valerian

3 BEDROOM HOME



Ground Floor

Living/Dining	5.47m x 4.67m (max)	17'11" x 15'4" (max)
Kitchen	3.17m x 2.49m	10'5" x 8'2"
Cloakroom	1.97m x 0.92m	6'6" x 3'0"



First Floor

Bedroom 1	4.16m x 3.46m (max) (max)	13'8" x 11'4" (max) (max)
Bedroom 1 En Suite	1.95m x 1.20m	6'5" x 3'11"
Bedroom 2	3.49m x 2.15m	11'5" x 7'1"
Bedroom 3	2.43m x 3.51m (max) (max)	8'0" x 11'6" (max) (max)
Bathroom	2.15m x 1.91m	7'1" x 6'3"

Clks - Cloakroom WS - Wardrobe Space (suggestion only, wardrobe not included)

Furniture arrangements are for illustrative purposes only. Items are not included, nor to scale.

The items shown in this key may be subject to change, and positions could vary from those indicated on this floorplan. Please refer to Sales Advisor for details of your selected plot. Computer generated image shown overleaf. External finishes, landscaping and configuration may vary from plot to plot. Please refer to Sales Advisor for further details. All dimensions are approximate and should not be used for carpet sizes, appliance spaces or furniture. We operate a policy of continuous improvement and individual features such as kitchen and bathroom layouts, doors, windows, garages and elevational treatments may vary from time to time. Consequently these particulars should be treated as general guidance only and do not constitute a contract, part of a contract or a warranty.



ashberrymhomes.co.uk

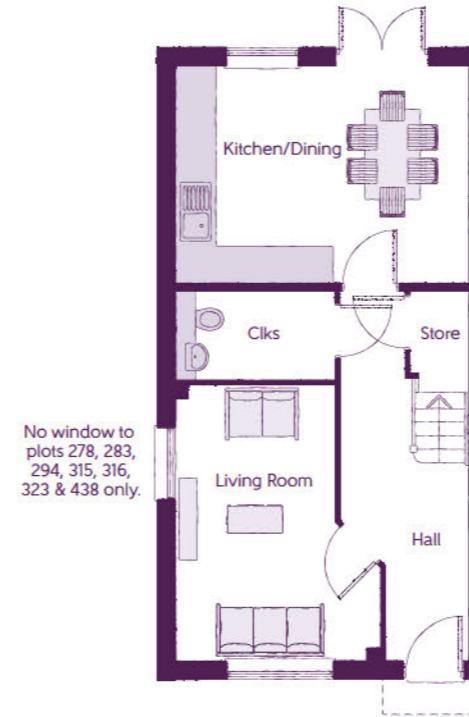
The Perilla

3 BEDROOM HOME



The Perilla

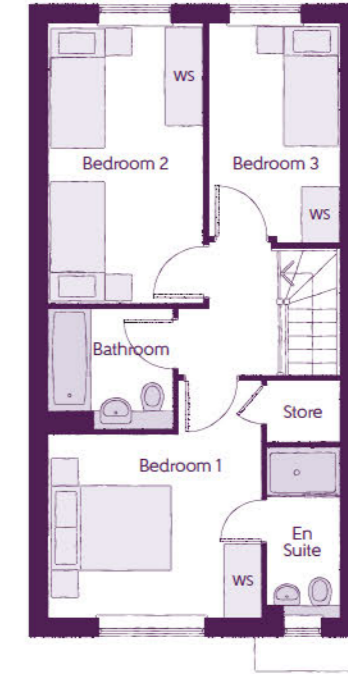
3 BEDROOM HOME



No window to plots 278, 283, 294, 315, 316, 323 & 438 only.

Ground Floor

Kitchen/Dining	4.79m x 3.55m	15'9" x 11'8"
Living Room	3.36m x 4.55m (max)	11'0" x 14'11" (max)
Cloakroom	2.61m x 1.46m	8'7" x 4'10"



First Floor

Bedroom 1	3.50m x 3.92m (max)	11'6" x 12'10" (max)
Bedroom 1 En Suite	1.20m x 2.82m	3'11" x 9'3"
Bedroom 2	2.55m x 4.62m	8'4" x 15'2"
Bedroom 3	2.15m x 3.61m	7'1" x 11'10"
Bathroom	2.06m x 1.99m	6'9" x 6'6"

Clks - Cloakroom WS - Wardrobe Space (suggestion only, wardrobe not included)

Furniture arrangements are for illustrative purposes only. Items are not included, nor to scale.

The items shown in this key may be subject to change, and positions could vary from those indicated on this floorplan. Please refer to Sales Advisor for details of your selected plot. Computer generated image shown overleaf. External finishes, landscaping and configuration may vary from plot to plot. Please refer to Sales Advisor for further details. All dimensions are approximate and should not be used for carpet sizes, appliance spaces or furniture. We operate a policy of continuous improvement and individual features such as kitchen and bathroom layouts, doors, windows, garages and elevational treatments may vary from time to time. Consequently these particulars should be treated as general guidance only and do not constitute a contract, part of a contract or a warranty.



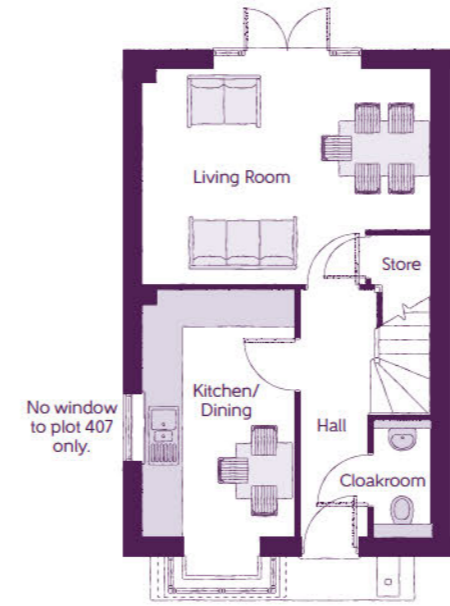
ashberrymhomes.co.uk

The Cedar

3 BEDROOM HOME

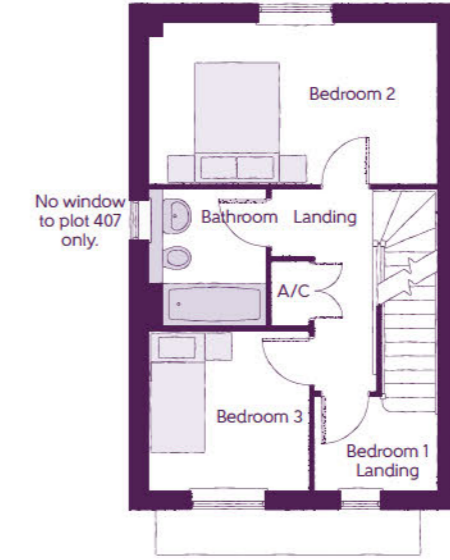
The Cedar

3 BEDROOM HOME



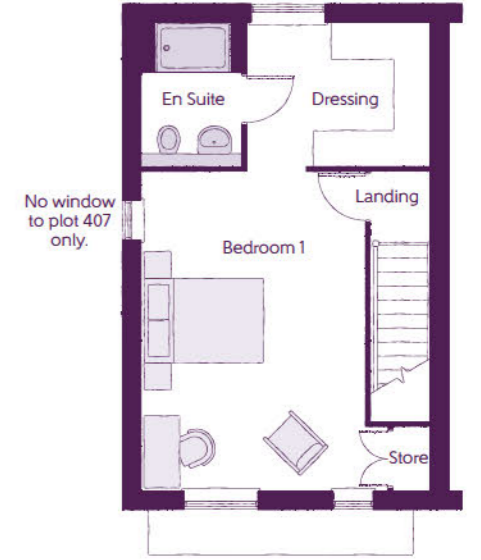
Ground Floor

Kitchen/Dining	4.74m x 2.50m	15'6" x 8'2"
Living Room	4.76m x 3.55m (max)	15'7" x 11'8" (max)
Cloakroom	1.93m x 0.95m	6'4" x 3'1"



First Floor

Bedroom 2	4.76m x 2.66m	15'7" x 8'9"
Bedroom 3	2.64m x 2.63m	8'8" x 8'8"
Bedroom 1 Landing	2.02m x 1.56m	6'8" x 5'1"
Bathroom	1.93m x 2.25m	6'4" x 7'5"



Second Floor

Bedroom 1	4.98m x 4.76m (max excl dormer)	16'4" x 15'7" (max excl dormer)
Bedroom 1 En Suite	2.37m x 1.65m	7'9" x 5'5"

Ashberry
Homes

A/C - Airing Cupboard

Furniture arrangements are for illustrative purposes only. Items are not included, nor to scale.

The items shown in this key may be subject to change, and positions could vary from those indicated on this floorplan. Please refer to Sales Advisor for details of your selected plot. Computer generated image shown overleaf. External finishes, landscaping and configuration may vary from plot to plot. Please refer to Sales Advisor for further details. All dimensions are approximate and should not be used for carpet sizes, appliance spaces or furniture. We operate a policy of continuous improvement and individual features such as kitchen and bathroom layouts, doors, windows, garages and elevational treatments may vary from time to time. Consequently these particulars should be treated as general guidance only and do not constitute a contract, part of a contract or a warranty.



ashberrymhomes.co.uk

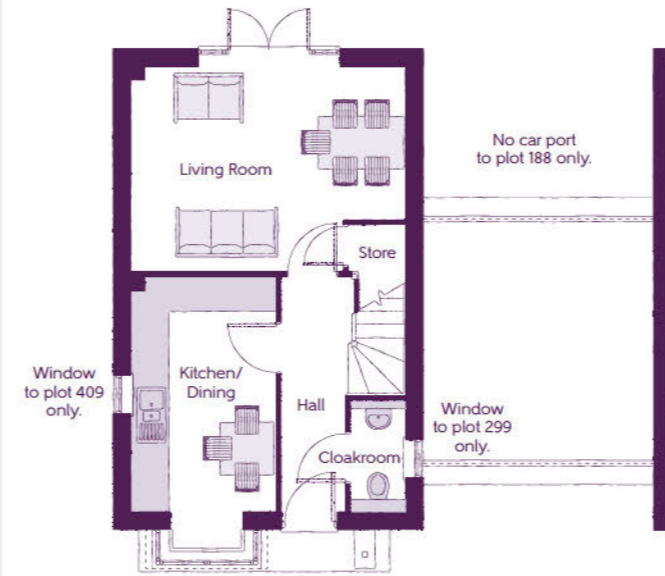
The Daffodil

3 BEDROOM HOME



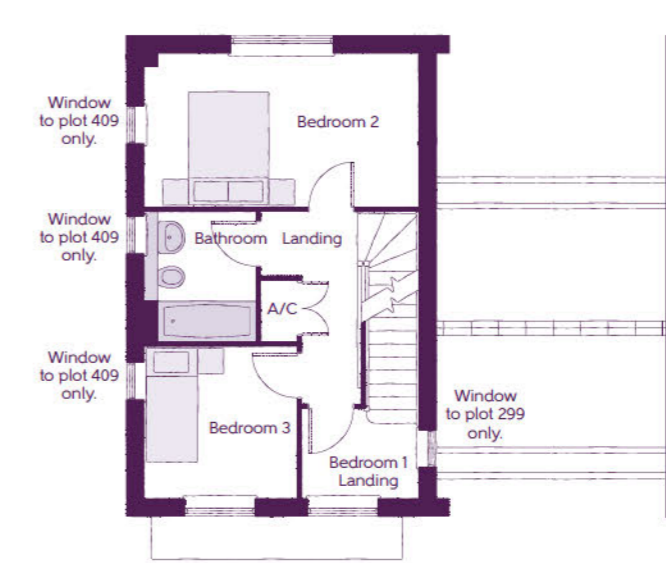
The Daffodil

3 BEDROOM HOME



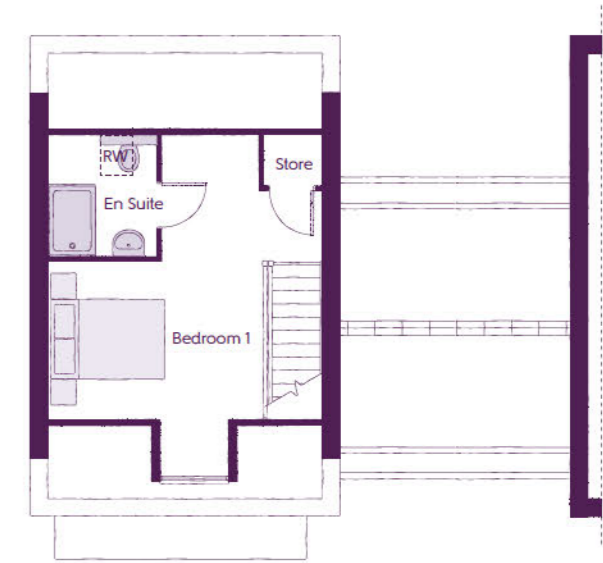
Ground Floor

Kitchen/Dining	4.74m x 2.50m	15'6" x 8'2"
Living Room	4.76m x 3.55m (max) (max)	15'7" x 11'8" (max) (max)
Cloakroom	1.93m x 0.95m	6'4" x 3'1"



First Floor

Bedroom 2	4.76m x 2.66m	15'7" x 8'9"
Bedroom 3	2.64m x 2.63m	8'8" x 8'8"
Bedroom 1 Landing	2.02m x 1.56m	6'8" x 5'1"
Bathroom	1.93m x 2.25m	6'4" x 7'5"



Second Floor

Bedroom 1	4.95m x 4.76m (max excl dormer) (max)	16'3" x 15'7" (max excl dormer) (max)
Bedroom 1 En Suite	2.10m x 1.88m	6'11" x 6'2"

RW - Roof Window A/C - Airing Cupboard

Furniture arrangements are for illustrative purposes only. Items are not included, nor to scale.

The items shown in this key may be subject to change, and positions could vary from those indicated on this floorplan. Please refer to Sales Advisor for details of your selected plot. Computer generated image shown overleaf. External finishes, landscaping and configuration may vary from plot to plot. Please refer to Sales Advisor for further details. All dimensions are approximate and should not be used for carpet sizes, appliance spaces or furniture. We operate a policy of continuous improvement and individual features such as kitchen and bathroom layouts, doors, windows, garages and elevational treatments may vary from time to time. Consequently these particulars should be treated as general guidance only and do not constitute a contract, part of a contract or a warranty.



ashberrymhomes.co.uk

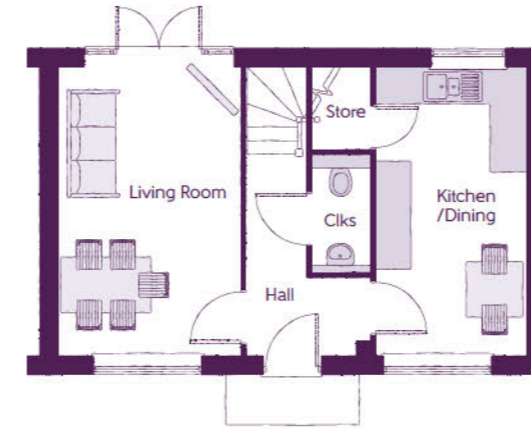
The Pine

4 BEDROOM HOME



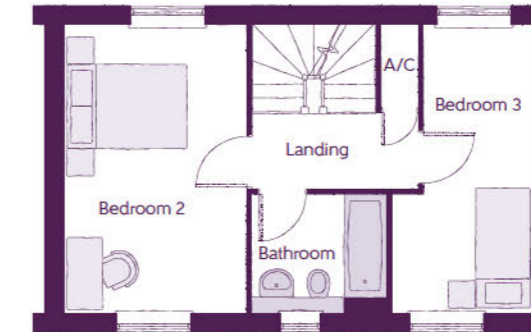
The Pine

4 BEDROOM HOME



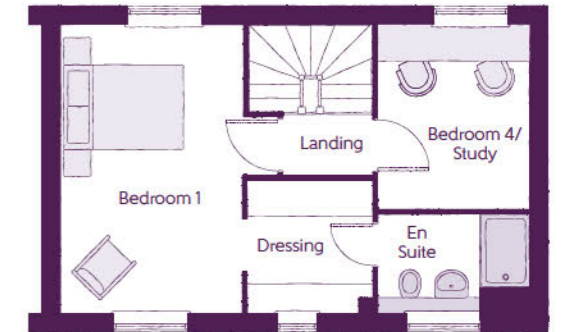
Ground Floor

Kitchen/Dining	4.76m x 2.49m	15'7" x 8'2"
Living Room	4.76m x 3.01m	15'7" x 9'10"
Cloakroom	1.94m x 0.96m	6'4" x 3'2"



First Floor

Bedroom 2	4.76m x 3.05m	15'7" x 10'0"
Bedroom 3	4.76m x 2.31m (max)	15'7" x 7'7" (max)
Bathroom	1.96m x 2.23m	6'5" x 7'4"



Second Floor

Bedroom 1	4.76m x 2.99m	15'7" x 9'10"
Bedroom 1 En Suite	2.49m x 1.62m	8'2" x 5'4"
Bedroom 4/Study	2.49m x 3.04m	8'2" x 10'0"

Clks - Cloakroom A/C - Airing Cupboard

Furniture arrangements are for illustrative purposes only. Items are not included, nor to scale.

The items shown in this key may be subject to change, and positions could vary from those indicated on this floorplan. Please refer to Sales Advisor for details of your selected plot. Computer generated image shown overleaf. External finishes, landscaping and configuration may vary from plot to plot. Please refer to Sales Advisor for further details. All dimensions are approximate and should not be used for carpet sizes, appliance spaces or furniture. We operate a policy of continuous improvement and individual features such as kitchen and bathroom layouts, doors, windows, garages and elevational treatments may vary from time to time. Consequently these particulars should be treated as general guidance only and do not constitute a contract, part of a contract or a warranty.



The Albertine

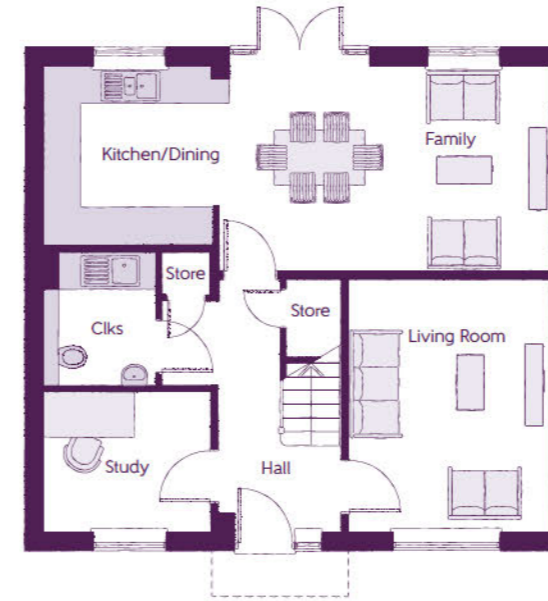
4 BEDROOM HOME

ashberrymhomes.co.uk

Ashberry
Homes

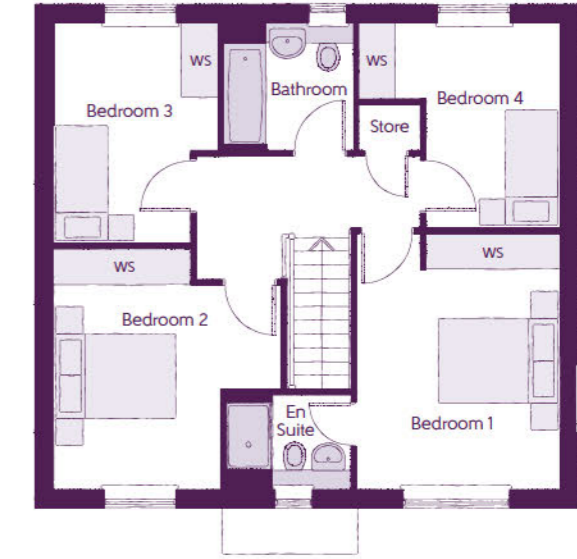
The Albertine

4 BEDROOM HOME



Ground Floor

Kitchen	2.88m x 2.92m	9'5" x 9'7"
Family/Dining	5.46m x 3.37m (max)	17'11" x 11'1" (max)
Living Room	4.14m x 3.32m	13'7" x 10'11"
Study	2.73m x 2.30m	8'11" x 7'7"
Cloakroom	2.20m x 1.85m	7'3" x 6'1"



First Floor

Bedroom 1	4.21m x 3.34m	13'10" x 10'11"
Bedroom 1 En Suite	2.01m x 1.55m	6'7" x 5'1"
Bedroom 2	3.96m x 3.74m (max)	13'0" x 12'3" (max)
Bedroom 3	3.62m x 2.70m (max)	11'11" x 8'10" (max)
Bedroom 4	3.37m x 3.31m (max)	11'1" x 10'10" (max)
Bathroom	2.15m x 2.08m	7'1" x 6'10"

Clks - Cloakroom WS - Wardrobe Space (suggestion only, wardrobe not included)

Furniture arrangements are for illustrative purposes only. Items are not included, nor to scale.

The items shown in this key may be subject to change, and positions could vary from those indicated on this floorplan. Please refer to Sales Advisor for details of your selected plot. Computer generated image shown overleaf. External finishes, landscaping and configuration may vary from plot to plot. Please refer to Sales Advisor for further details. All dimensions are approximate and should not be used for carpet sizes, appliance spaces or furniture. We operate a policy of continuous improvement and individual features such as kitchen and bathroom layouts, doors, windows, garages and elevational treatments may vary from time to time. Consequently these particulars should be treated as general guidance only and do not constitute a contract, part of a contract or a warranty.



The Albertine

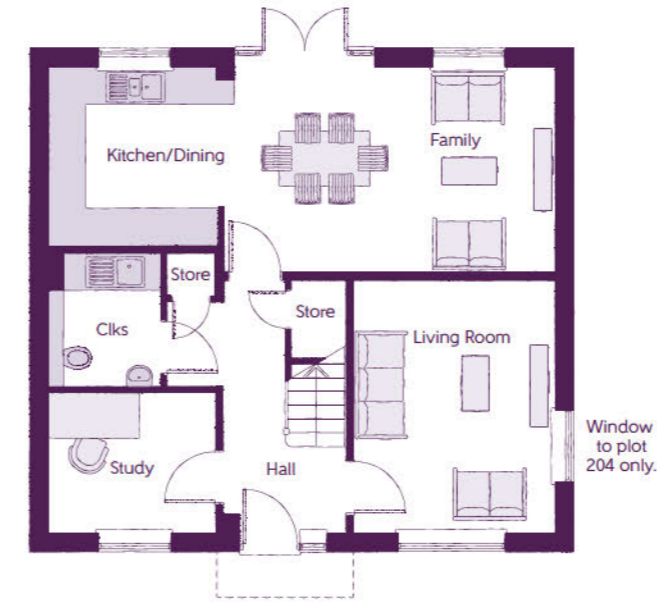
4 BEDROOM HOME

ashberrymhomes.co.uk

Ashberry
Homes

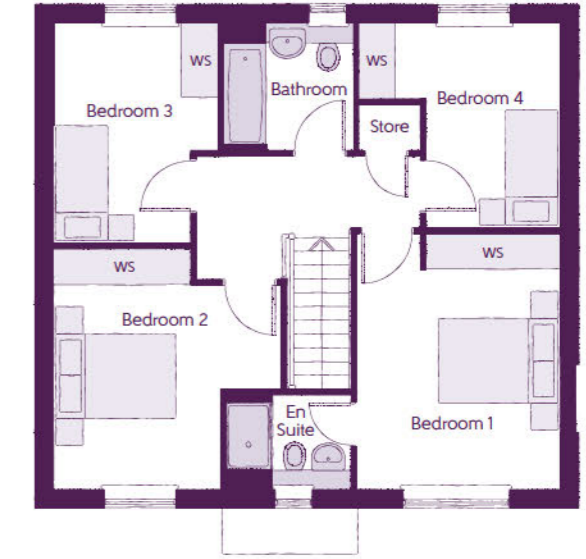
The Albertine

4 BEDROOM HOME



Ground Floor

Kitchen	2.88m x 2.92m	9'5" x 9'7"
Family/Dining	5.46m x 3.37m (max)	17'11" x 11'1" (max)
Living Room	4.14m x 3.32m	13'7" x 10'11"
Study	2.73m x 2.30m	8'11" x 7'7"
Cloakroom	2.20m x 1.85m	7'3" x 6'1"



First Floor

Bedroom 1	4.21m x 3.34m	13'10" x 10'11"
Bedroom 1 En Suite	2.01m x 1.55m	6'7" x 5'1"
Bedroom 2	3.96m x 3.74m (max) (max)	13'0" x 12'3" (max) (max)
Bedroom 3	3.62m x 2.70m (max)	11'11" x 8'10" (max)
Bedroom 4	3.37m x 3.31m (max)	11'1" x 10'10" (max)
Bathroom	2.15m x 2.08m	7'1" x 6'10"

Clks - Cloakroom WS - Wardrobe Space (suggestion only, wardrobe not included)

Furniture arrangements are for illustrative purposes only. Items are not included, nor to scale.

The items shown in this key may be subject to change, and positions could vary from those indicated on this floorplan. Please refer to Sales Advisor for details of your selected plot. Computer generated image shown overleaf. External finishes, landscaping and configuration may vary from plot to plot. Please refer to Sales Advisor for further details. All dimensions are approximate and should not be used for carpet sizes, appliance spaces or furniture. We operate a policy of continuous improvement and individual features such as kitchen and bathroom layouts, doors, windows, garages and elevational treatments may vary from time to time. Consequently these particulars should be treated as general guidance only and do not constitute a contract, part of a contract or a warranty.



The Camellia

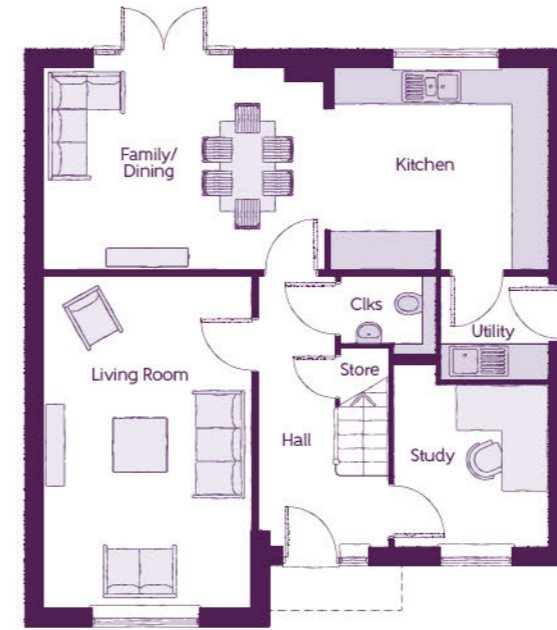
4 BEDROOM HOME

ashberrymhomes.co.uk

Ashberry
Homes

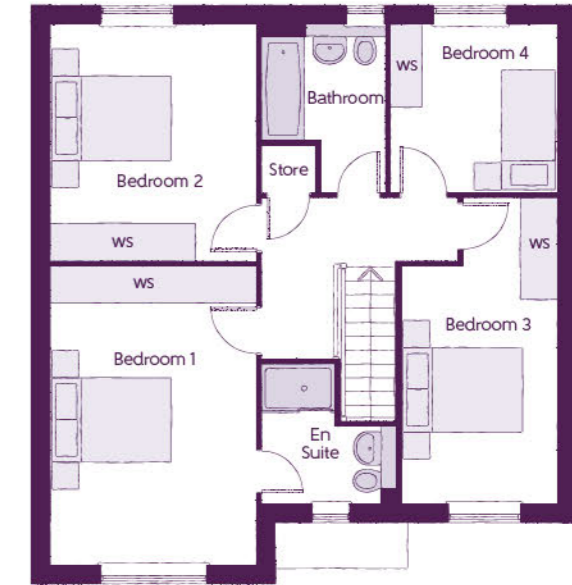
The Camellia

4 BEDROOM HOME



Ground Floor

Kitchen	3.62m x 3.30m	11'11" x 10'10"
Family/Dining	4.63m x 3.30m	15'2" x 10'10"
Living Room	5.45m x 3.39m	17'11" x 11'1"
Study	2.64m x 2.55m (max)	8'8" x 8'4" (max)
Utility	1.78m x 1.71m	5'10" x 5'7"
Cloakroom	1.57m x 1.32m (max)	5'2" x 4'4" (max)



First Floor

Bedroom 1	4.92m x 3.39m	16'2" x 11'1"
Bedroom 1 En Suite	2.27m x 2.27m (max) (max)	7'5" x 7'5" (max) (max)
Bedroom 2	3.89m x 3.39m	12'9" x 11'1"
Bedroom 3	5.04m x 2.55m (max)	16'6" x 8'4" (max)
Bedroom 4	2.76m x 2.75m	9'1" x 9'0"
Bathroom	2.76m x 2.03m (max) (max)	9'1" x 6'8" (max) (max)

Clks - Cloakroom WS - Wardrobe Space (suggestion only, wardrobe not included)

Furniture arrangements are for illustrative purposes only. Items are not included, nor to scale.

The items shown in this key may be subject to change, and positions could vary from those indicated on this floorplan. Please refer to Sales Advisor for details of your selected plot. Computer generated image shown overleaf. External finishes, landscaping and configuration may vary from plot to plot. Please refer to Sales Advisor for further details. All dimensions are approximate and should not be used for carpet sizes, appliance spaces or furniture. We operate a policy of continuous improvement and individual features such as kitchen and bathroom layouts, doors, windows, garages and elevational treatments may vary from time to time. Consequently these particulars should be treated as general guidance only and do not constitute a contract, part of a contract or a warranty.



ashberrymhomes.co.uk

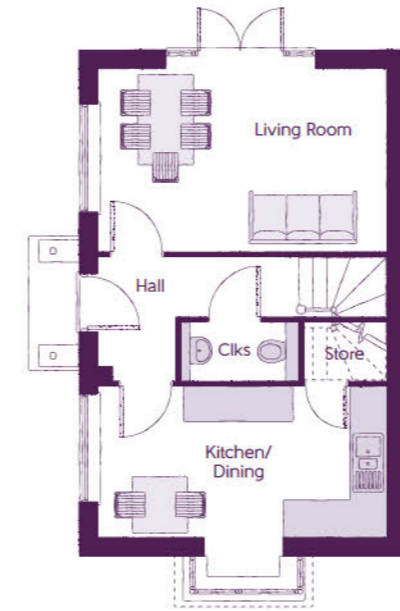
The Oak

4 BEDROOM HOME



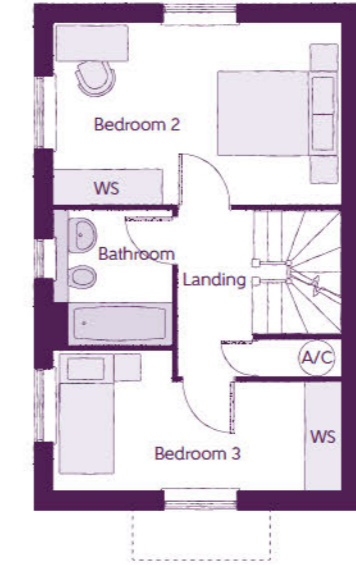
The Oak

4 BEDROOM HOME



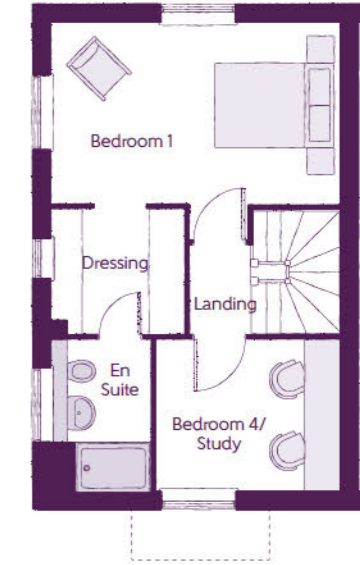
Ground Floor

Kitchen/Dining	4.75m x 2.49m	15'7" x 8'2"
Living Room	4.75m x 3.00m	15'7" x 9'10"
Cloakroom	1.93m x 0.98m	6'4" x 3'3"



First Floor

Bedroom 2	4.75m x 3.00m	15'7" x 9'10"
Bedroom 3	4.75m x 2.30m (max)	15'7" x 7'7" (max)
Bathroom	2.22m x 1.96m	7'3" x 6'5"



Second Floor

Bedroom 1	4.75m x 3.00m	15'7" x 9'10"
Bedroom 1 En Suite	2.49m x 1.64m	8'2" x 5'5"
Bedroom 4/Study	3.04m x 2.50m	10'0" x 8'2"

Clks - Cloakroom WS - Wardrobe Space (suggestion only, wardrobe not included) A/C - Airing Cupboard

Furniture arrangements are for illustrative purposes only. Items are not included, nor to scale.

The items shown in this key may be subject to change, and positions could vary from those indicated on this floorplan. Please refer to Sales Advisor for details of your selected plot. Computer generated image shown overleaf. External finishes, landscaping and configuration may vary from plot to plot. Please refer to Sales Advisor for further details. All dimensions are approximate and should not be used for carpet sizes, appliance spaces or furniture. We operate a policy of continuous improvement and individual features such as kitchen and bathroom layouts, doors, windows, garages and elevational treatments may vary from time to time. Consequently these particulars should be treated as general guidance only and do not constitute a contract, part of a contract or a warranty.



ashberrymhomes.co.uk

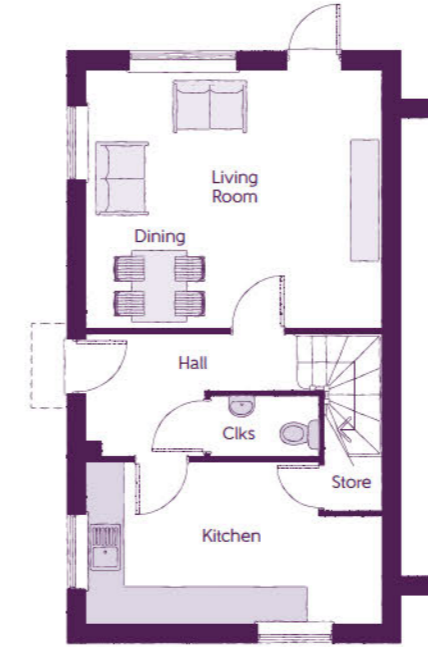
The Audley

3 BEDROOM HOME

Ashberry
Homes

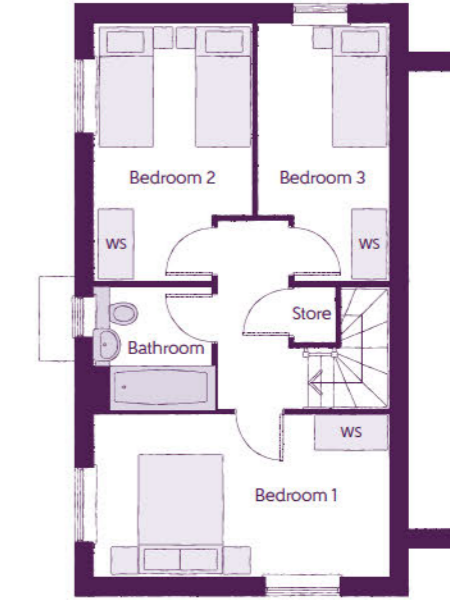
The Audley

3 BEDROOM HOME



Ground Floor

Living/Dining	4.84m x 4.25m	15'11" x 13'11"
Kitchen	4.84m x 2.66m (max) (max)	15'11" x 8'9" (max) (max)



First Floor

Bedroom 1	4.85m x 2.68m	15'11" x 8'10"
Bedroom 2	4.26m x 2.59m (max) (max)	14'0" x 8'6" (max) (max)
Bedroom 3	4.26m x 3.17m (max) (max)	14'0" x 7'1" (max) (max)
Bathroom	2.01m x 1.92m (max) (max)	6'7" x 6'4" (max) (max)

Clks - Cloakroom WS - Wardrobe Space (suggestion only, wardrobe not included)

Furniture arrangements are for illustrative purposes only. Items are not included, nor to scale.

The items shown in this key may be subject to change, and positions could vary from those indicated on this floorplan. Please refer to Sales Advisor for details of your selected plot. Computer generated image shown overleaf. External finishes, landscaping and configuration may vary from plot to plot. Please refer to Sales Advisor for further details. All dimensions are approximate and should not be used for carpet sizes, appliance spaces or furniture. We operate a policy of continuous improvement and individual features such as kitchen and bathroom layouts, doors, windows, garages and elevational treatments may vary from time to time. Consequently these particulars should be treated as general guidance only and do not constitute a contract, part of a contract or a warranty.



The Bradwell

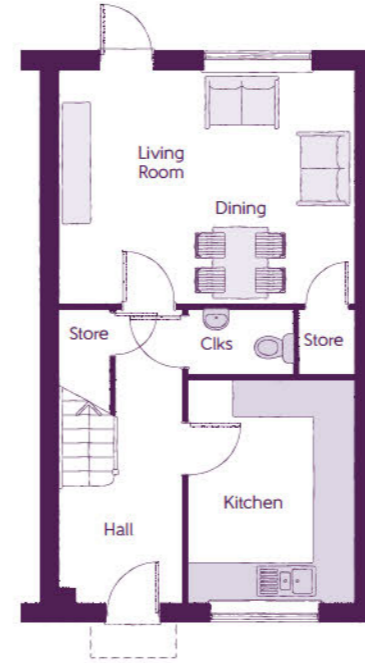
3 BEDROOM HOME

ashberrymhomes.co.uk



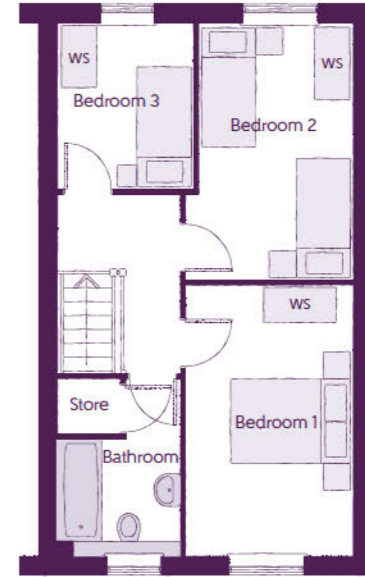
The Bradwell

3 BEDROOM HOME



Ground Floor

Living/Dining	4.84m x 3.86m	15'11" x 12'8"
Kitchen	3.65m x 2.73m	12'0" x 8'11"



First Floor

Bedroom 1	4.62m x 2.75m	15'2" x 9'0"
Bedroom 2	4.24m x 2.53m	13'11" x 8'4"
Bedroom 3	2.73m x 2.22m	8'11" x 7'3"
Bathroom	2.00m x 1.92m (max) (max)	6'7" x 6'4" (max) (max)

Clks - Cloakroom WS - Wardrobe Space (suggestion only, wardrobe not included)

Furniture arrangements are for illustrative purposes only. Items are not included, nor to scale.

The items shown in this key may be subject to change, and positions could vary from those indicated on this floorplan. Please refer to Sales Advisor for details of your selected plot. Computer generated image shown overleaf. External finishes, landscaping and configuration may vary from plot to plot. Please refer to Sales Advisor for further details. All dimensions are approximate and should not be used for carpet sizes, appliance spaces or furniture. We operate a policy of continuous improvement and individual features such as kitchen and bathroom layouts, doors, windows, garages and elevational treatments may vary from time to time. Consequently these particulars should be treated as general guidance only and do not constitute a contract, part of a contract or a warranty.



House Specification



ashberrymhomes.co.uk

It's the little things that make a house your home

Add your own Personal Touch with our optional selection of finishes and fittings.

From upgrading our standard fittings to adding additional items, you can make your new home as individual as you are.

Choose from our range of Personal Touch options:

Kitchens

- Integrated or freestanding washer/dryer
- Integrated fridge/freezer
- Integrated or freestanding dishwasher
- Integrated or freestanding washing machine
- Upgrade to composite worktops
- Double oven
- Upgrade hob
- Integrated microwave

Flooring

- Choose from carpets, vinyl or laminate

Tiling

- Full and half height tiling
- Comprehensive upgrade options

Plumbing

- Heated towel rail

Security

- Intruder alarms
- Security lights

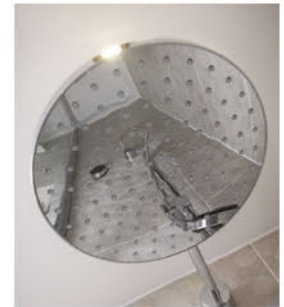
Electrical

- Additional sockets
- Additional switches
- Chrome sockets
- Chrome switches
- Under-unit lighting
- Shaver socket
- Recessed lighting
- BT and TV points

Miscellaneous

- Turf
- Wardrobes

Although we make every effort to ensure that as many Ashberry Personal Touch choices as possible are available to you, not every development offers all the range shown above. Therefore we recommend that you consult our Sales Advisor.



		2 Bedroom Homes	3 Bedroom Homes	4 Bedroom Homes
FINISHES				
Loft Hatch	Loft Hatch - Hinged Drop Down ** ††	●	●	●
Entrance Doors	GRP Insulated Door	●	●	●
Ceilings	Crown White Matt Emulsion	●	●	●
Walls	Crown White Matt Emulsion	●	●	●
Floors	Concrete Ground Floor / Chipboard First Floor	●	●	●
Window Cills	White Gloss MDF	●	●	●
Stairs	Timber Stair - White Gloss MDF Strings	●	●	●
Balusters	White Gloss Square Balusters	●	●	●
Newel Posts	White Gloss Square Newels	●	●	●
Newel Caps	White Gloss Pyramid Newel Caps	●	●	●
Handrail	White Gloss Heavy Duty Handrail	●	●	●
Skirting	White Gloss 94x14 MDF Grooved & Chamfered	●	●	●
	White Gloss 120x14 MDF Grooved & Chamfered	●	●	●
Architrave	White Gloss 69x18 MDF Grooved & Chamfered	●	●	●
Internal Doors	White Pre Finished Ladder Internal Doors	●	●	●
Ironmongery	Satin CSL1192 Door Furniture	●	●	●

		2 Bedroom Homes	3 Bedroom Homes	4 Bedroom Homes
KITCHEN				
Frontals	Bellway Band B options ---- Bellway Band C options ----	●	●	●
Carcass	Premium Grade 18mm thk Colour Matched Carcass	●	●	●
Units	Frontal Matching Table Ends Unit Framing	●	●	●
Worktops	40mm Square Edge Worktops with upstand	●	●	●
Kitchen Sink	Rangemaster Aria Single Bowl SS Sink & Aquamono Tap (inc Sink Liner) Rangemaster Aria Bowl & Half SS Sink & Aquamono Tap (inc Sink Liner) Rangemaster Glendale Bowl & Half SS Sink & Aquamono Tap (inc Sink Liner)	●	●	●
Utility Sink	Rangemaster Aria Single Bowl SS Sink & Aquamono Tap (inc Sink Liner) Rangemaster Glendale Single Bowl SS Sink & Aquamono Tap (inc Sink Liner)	●	●	●
Appliances Oven	Zanussi Single Oven ZOB343X A E G Double Oven DEB331010M	●	●	●
Appliances Hob	Zanussi 4 Burner Gas Hob ZGH62414XS & SS Splashback A E G 4 Burner Gas Hob HCB642005M & Glass Splashback	●	●	●
Appliances Extractor	Cooker Hood Extractor LFC316X A E G Cooker Hood Extractor DKB4650M	●	●	●
Appliances Fridge Freezer	Fridge Freezer Space Only Zanussi 70/30 Fridge Freezer ZNLN18F51	●	●	●
Appliance Dishwasher	Removeable Unit (inc Feed & Waste) ‡ Zanussi Dishwasher ZDLN1511	●	●	●
Appliance Washing Machine	Washing Machine Space Only (inc Feed & Waste)	●	●	●

		2 Bedroom Homes	3 Bedroom Homes	4 Bedroom Homes
WET ROOMS				
Cloaks - WC	ROCA DEBBA WC with Concealed Cistern & PL2 Flush Plate ^^ Roca DEBBA WC with Concealed Cistern & PL2 Flush Plate ^^^	●	●	●
Cloaks - Basin	Roca Wash Hand Basin †††	●	●	●
Cloaks - Brassware	Bristan PISA Small Basin Chrome Mixer Tap	●	●	●
Cloaks - Tiling	Band 2 Tiling to WC Boxing, Splashback Tiling to WHB, Box Edge Brushed Trim Band 3 Tiling to WC Boxing, Splashback Tiling to WHB, Box Edge Brushed Trim	●	●	●
Bathroom - WC	ROCA DEBBA WC with Concealed Cistern & PL2 Flush Plate ^^ Roca DEBBA WC with Concealed Cistern & PL2 Flush Plate ^^^	●	●	●
Bathroom - Basin	Roca DEBBA 500 WHB with Full Pedestal --- Roca DEBBA 550 WHB with Semi Pedestal ---	●	●	●
Bathroom - Bath	Roca OSLO Acrylic Bath & Rigid Bath Panel	●	●	●
Bathroom - Brassware	Bristan FRENZY Chrome Bath & Basin Mixer Taps Bristan HOURGLASS Chrome Bath & Basin Mixer Taps	●	●	●
Bathroom - Shower Tray	Mira FLIGHT Low Shower Tray with Mira ELEVATE Enclosure †††	●	●	●
Bathroom - Shower	Mira MINIMAL Single Thermostatic Shower # Mira MINIMAL Single Thermostatic Shower &	●	●	●
Bathroom - Tiling	1/2 Height Tiling (Band 2) to Wet Walls with Box Edged Brushed Trim *** ††† 1/2 Height Tiling (Band 3) to Wet Walls with Box Edged Brushed Trim *** †††	●	●	●
En-Suite - WC	ROCA DEBBA WC with Concealed Cistern & PL2 Flush Plate ^^ Roca DEBBA WC with Concealed Cistern & PL2 Flush Plate ^^^	●	●	●

		2 Bedroom Homes	3 Bedroom Homes	4 Bedroom Homes
MECHANICAL				
Boiler	Ideal LOGIC Combination Boiler (Cb) ^ Ideal LOGIC Boiler & ThermoQ Evocyl HW Cylinder (HOb) ^	●	●	●
Controls	Google Nest 3RD Gen Dual Zone Learning Thermostat	●	●	●
Radiators	Stelrad Compact Steel Panel Radiators with Grilles	●	●	●
Towel Warmers	Flat Chrome to Bathroom & En-Suite 1	●	●	●
Ventilation	Window Trickle Ventilators with Mechanical Extract Fans (system 1)	●	●	●

		2 Bedroom Homes	3 Bedroom Homes	4 Bedroom Homes
ELECTRICS				
Home Working	Dedicated Power, USB & Data points	●	●	●
Safety - Heat	Heat Detector DET &&	●	●	●
Smart Home	Google Nest Hub 2nd Generation (GA01892/GB) & Video Doorbell (GWX3T)	●	●	●
Safety - Fire	Optical Smoke Detector LD3 D2 DET	●	●	●
Safety - Carbon	Mains Wired Carbon Monoxide Detector - Appleby	●	●	●
Consumer Unit	Wylex Consumer Unit	●	●	●
Sockets & Switches	Electrium CASA White Fittings	●	●	●
USB Locations	Kitchen, Living Room & Bedroom 1 ONLY	●	●	●
Shaver / Toothbrush Point	Bathroom ONLY Bathroom & Ensuite 1 Only	●	●	●
Lighting	Pendant Fitting to Habitable Rooms	●	●	●
Lighting - Kitchen	White Recessed Spot Lights	●	●	●
Lighting - Kitchen Under Unit	1st Fix Wiring Only	●	●	●
Lighting - Bathroom & En-Suites	White Recessed Spot Lights	●	●	●
Lighting - External	External Light Clifton Brushed Steel Up/Down (Front & Rear)	●	●	●
Communications - TV	TV Point to Living Room, Family, Bedroom 1 & Study	●	●	●
Communications - Voice	Telephone Point to Living Room	●	●	●
Communications - Data	Cat 6 Network Point to Living Room, Family, Bedroom 1 & Study	●	●	●
Communications - Satellite	Dual Connection Satellite Points to Living Room	●	●	●
Broadband	Ultrafast Fibre Connectivity Openreach	●	●	●

		2 Bedroom Homes	3 Bedroom Homes	4 Bedroom Homes
EXTERNALS & MISC				
Build Method	Masonry ###	●	●	●
Maintenance	External Tap	●	●	●
Number Plaque	Artisan Number Plaque	●	●	●
Footpath & Patio	Grey River PCC Flags 450x450x32's	●	●	●
Garages	Steel Panel Up & Over Retractable Garage Door ###	●	●	●
Drives	Bitmac Black ##	●	●	●
Landscaping - Front	Medallion Turf & Landscape Planting --	●	●	●
Landscaping - Rear	Rotovated Topsoil --	●	●	●
EV Charging Terminal	Universal Socket 7kW * †	●	●	●

* refer site layout

** fire rated as necessary

*** full height around bath where shower provided as standard

† electrical infrastructure upgrade maybe required

†† where layout allows

††† full height to shower enclosure

‡ at build stage

‡‡ flow regulator fitted to bath mixer if serving single thermostatic shower & fed via combination boiler

‡‡‡ housetype dependent - liaise with sales executive

^ housetype dependent on particular 4 bed housetypes - liaise with Sales Advisor

^^ inc soft close mechanism seat

^^^ inc soft close mechanism seat on 4 & 5 Bedroom Homes ONLY

over bath ONLY incorporating MIRA bath screen 11863.004 where no shower elsewhere in dwelling

plot dependent

plot specific, refer site layout

-- refer site landscape layout

--- semi recessed basin if AD M4(ii) applicable

---- soft close mechanism to doors & drawers

& where provision of shower tray allows

&& where shown on layouts

Information correct at time of going to print. In the event of product discontinuation or issues with stock availability Ashberry will always fit a suitable alternative.

10 year **NHBC** warranty



ashberrymhomes.co.uk

The Caldecotte & The Furzton Apartments

PLOTS 176 - 181 &
PLOTS 329 - 334

2 BEDROOM APARTMENTS



The Caldecotte & The Furzton Apartments

2 BEDROOM APARTMENTS



Plots 176, 178, 180, 329, 331 & 333 (Ground floor shown)

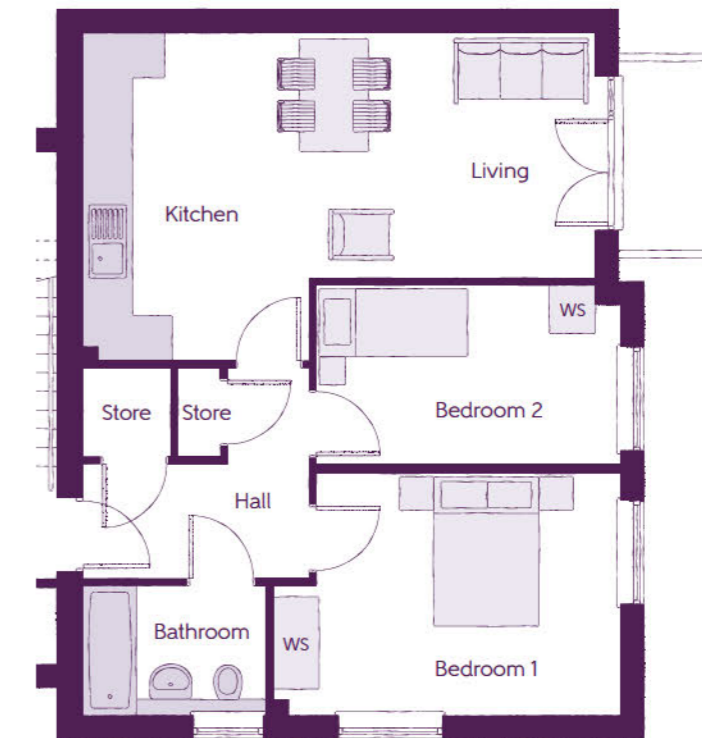
Kitchen	4.35m x 3.17m	14'3" x 10'5"
Living Area	3.91m x 3.14m	12'10" x 10'4"
Bedroom 1	3.45m x 3.31m	11'4" x 10'10"
Bedroom 2	3.79m x 2.29m	12'5" x 7'6"

*Please note plots 329, 331 & 333 are handed.

WS - Wardrobe Space (suggestion only, wardrobe not included) --- - Reduced Head Height

Furniture arrangements are for illustrative purposes only. Items are not included, nor to scale.

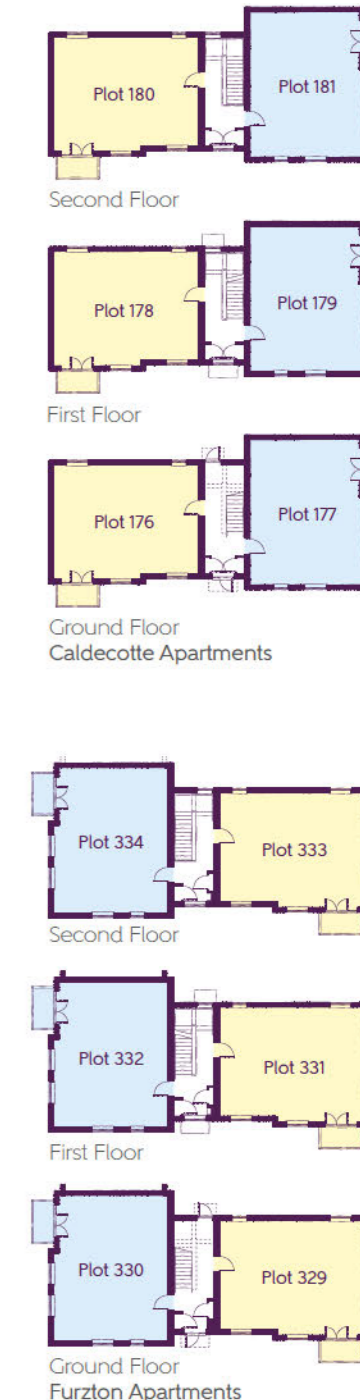
The items shown in this key may be subject to change, and positions could vary from those indicated on this floorplan. Please refer to Sales Advisor for details of your selected plot. Computer generated image shown overleaf. External finishes, landscaping and configuration may vary from plot to plot. Please refer to Sales Advisor for further details. All dimensions are approximate and should not be used for carpet sizes, appliance spaces or furniture. We operate a policy of continuous improvement and individual features such as kitchen and bathroom layouts, doors, windows, garages and elevational treatments may vary from time to time. Consequently these particulars should be treated as general guidance only and do not constitute a contract, part of a contract or a warranty.



Plots 177, 179, 181, 330, 332 & 334 (Ground floor shown)

Kitchen	4.38m x 3.03m	14'4" x 9'11"
Living Area	3.77m x 3.22m	12'4" x 10'7"
Bedroom 1	4.56m x 3.19m (max)	14'11" x 10'6" (max)
Bedroom 2	4.02m x 2.37m (max)	13'2" x 7'9" (max)

*Please note plots 330, 332 & 334 are handed.



Second Floor

First Floor

Ground Floor
Caldecotte Apartments

Second Floor

First Floor

Ground Floor
Furzton Apartments



ashberrymhomes.co.uk

The Willen Apartments

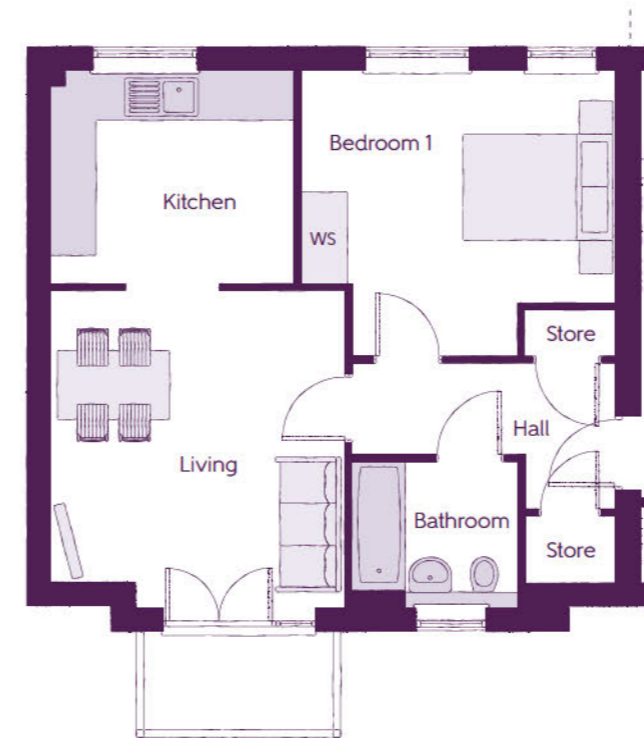
PLOTS 182 - 187

1 BEDROOM APARTMENTS



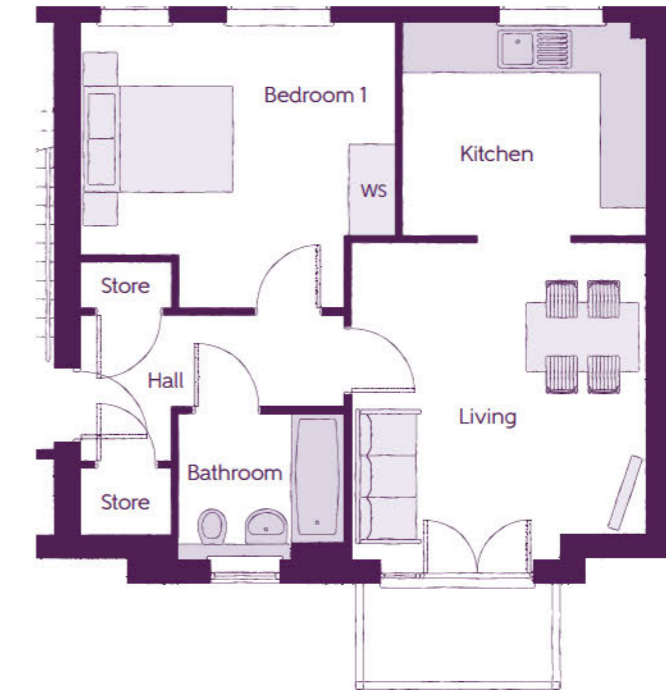
The Willen Apartments

1 BEDROOM APARTMENTS



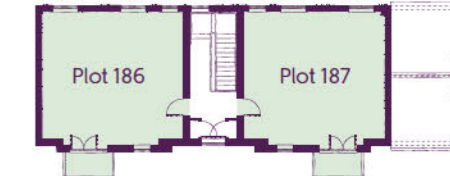
Plots 182, 184 & 186 (Ground floor shown)

Kitchen	3.25m x 2.85m	10'8" x 9'4"
Living Area	4.22m x 3.83m (max)	13'10" x 12'7" (max)
Bedroom 1	4.20m x 3.11m (max)	13'9" x 10'2" (max)

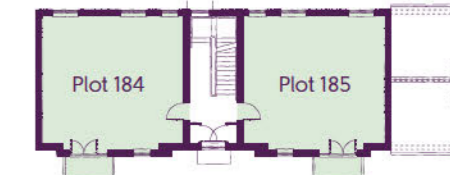


Plots 183, 185 & 187 (Ground floor shown)

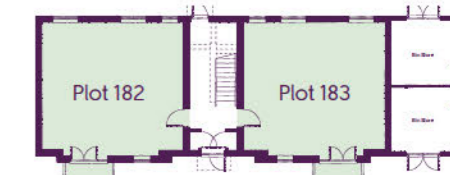
Kitchen	3.25m x 2.85m	10'8" x 9'4"
Living Area	4.22m x 3.83m (max)	13'10" x 12'7" (max)
Bedroom 1	4.20m x 3.11m (max)	13'9" x 10'2" (max)



Second Floor



First Floor



Ground Floor

Furniture arrangements are for illustrative purposes only. Items are not included, nor to scale.

WS - Wardrobe Space (suggestion only, wardrobe not included) --- Reduced Head Height

The items shown in this key may be subject to change, and positions could vary from those indicated on this floorplan. Please refer to Sales Advisor for details of your selected plot. Computer generated image shown overleaf. External finishes, landscaping and configuration may vary from plot to plot. Please refer to Sales Advisor for further details. All dimensions are approximate and should not be used for carpet sizes, appliance spaces or furniture. We operate a policy of continuous improvement and individual features such as kitchen and bathroom layouts, doors, windows, garages and elevational treatments may vary from time to time. Consequently these particulars should be treated as general guidance only and do not constitute a contract, part of a contract or a warranty.



ashberrymhomes.co.uk

The Tongwell Apartments

PLOTS 244 - 249

2 BEDROOM APARTMENTS

Ashberry
Homes

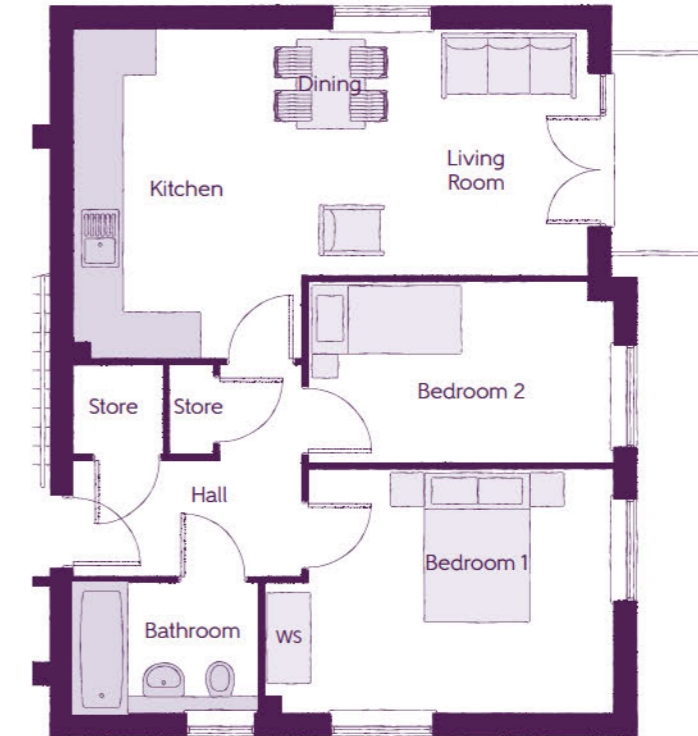
The Tongwell Apartments

2 BEDROOM APARTMENTS



Plots 244, 246 & 248 (Ground floor shown)

Kitchen/Living/Dining	4.41m x 7.15m (max) (max)	14'6" x 23'6" (max) (max)
Bedroom 1	3.38m x 3.49m	11'1" x 11'5"
Bedroom 2	2.32m x 3.83m	7'7" x 12'7"
Bathroom	2.23m x 1.97m	7'4" x 6'5"



Plots 245, 247 & 249 (Ground floor shown)

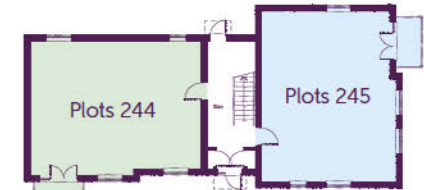
Kitchen/Living/Dining	6.81m x 4.37m (max) (max)	22'4" x 14'4" (max) (max)
Bedroom 1	4.06m x 3.23m (min) (max)	13'4" x 10'7" (min) (max)
Bedroom 2	4.06m x 2.40m (max) (max)	13'4" x 7'10" (max) (max)
Bathroom	2.46m x 1.74m	8'1" x 5'9"



Second Floor



First Floor



Ground Floor

Furniture arrangements are for illustrative purposes only. Items are not included, nor to scale.

WS - Wardrobe Space (suggestion only, wardrobe not included)

The items shown in this key may be subject to change, and positions could vary from those indicated on this floorplan. Please refer to Sales Advisor for details of your selected plot. Computer generated image shown overleaf. External finishes, landscaping and configuration may vary from plot to plot. Please refer to Sales Advisor for further details. All dimensions are approximate and should not be used for carpet sizes, appliance spaces or furniture. We operate a policy of continuous improvement and individual features such as kitchen and bathroom layouts, doors, windows, garages and elevational treatments may vary from time to time. Consequently these particulars should be treated as general guidance only and do not constitute a contract, part of a contract or a warranty.



ashberrymhomes.co.uk

The Lodge Apartments

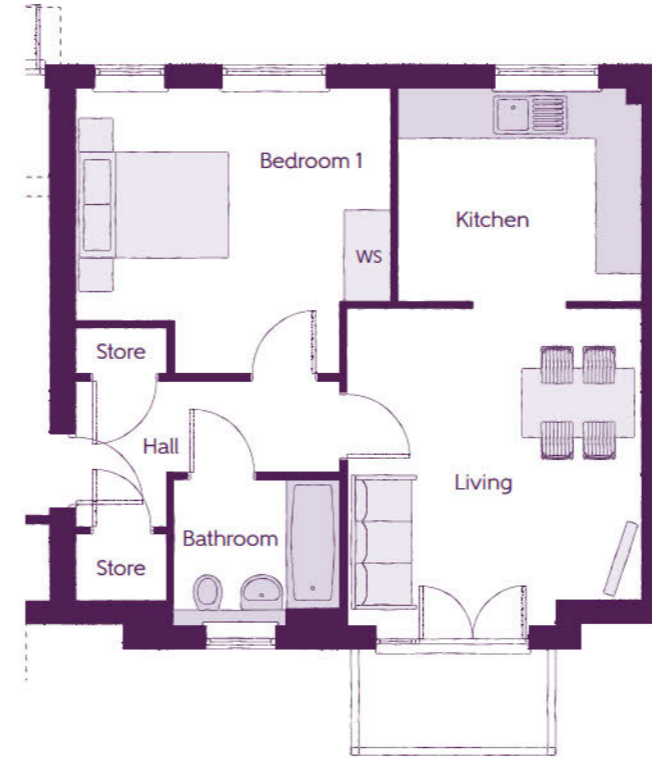
PLOTS 342 - 347

1 BEDROOM APARTMENTS



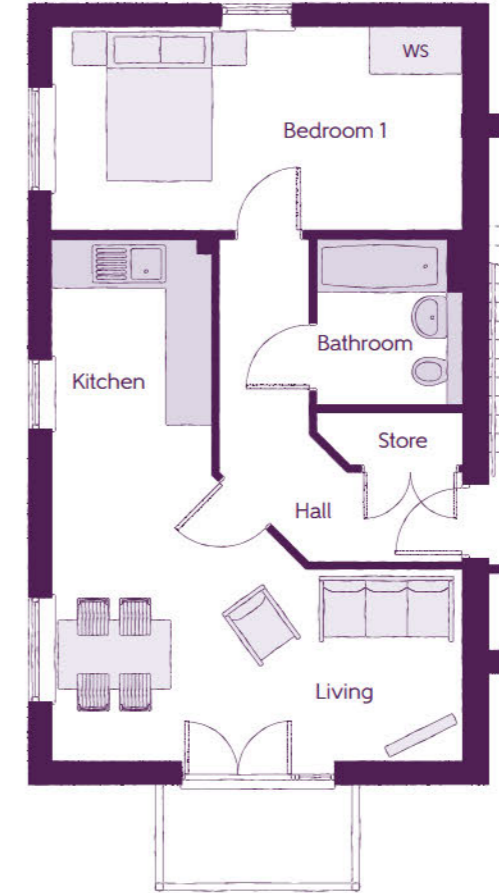
The Lodge Apartments

1 BEDROOM APARTMENTS



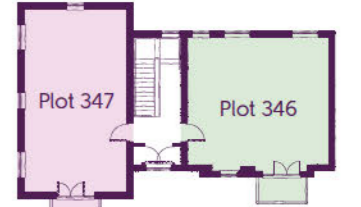
Plots 342, 344 & 346 (Ground floor shown)

Kitchen	3.26m x 2.86m	10'8" x 9'5"
Living Area	3.98m x 3.88m (max)	13'1" x 12'9" (max)
Bedroom 1	4.20m x 3.12m (max)	13'9" x 10'3" (max)

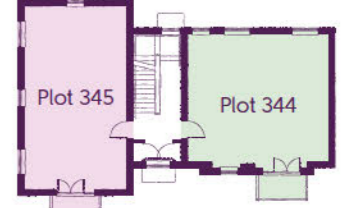


Plots 343, 345 & 347 (Ground floor shown)

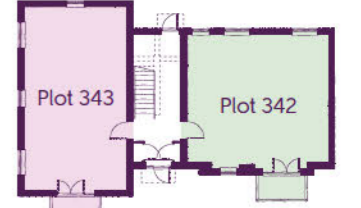
Kitchen	3.12m x 2.14m	10'3" x 7'0"
Living Area	5.46m x 2.57m (max)	17'11" x 8'5" (max)
Bedroom 1	5.46m x 2.71m	17'11" x 8'10"



Second Floor



First Floor



Ground Floor

Furniture arrangements are for illustrative purposes only. Items are not included, nor to scale.

WS - Wardrobe Space (suggestion only, wardrobe not included) --- Reduced Head Height

The items shown in this key may be subject to change, and positions could vary from those indicated on this floorplan. Please refer to Sales Advisor for details of your selected plot. Computer generated image shown overleaf. External finishes, landscaping and configuration may vary from plot to plot. Please refer to Sales Advisor for further details. All dimensions are approximate and should not be used for carpet sizes, appliance spaces or furniture. We operate a policy of continuous improvement and individual features such as kitchen and bathroom layouts, doors, windows, garages and elevational treatments may vary from time to time. Consequently these particulars should be treated as general guidance only and do not constitute a contract, part of a contract or a warranty.



ashberrymhomes.co.uk

The Kingfisher Apartments

PLOTS 387 - 392

2 BEDROOM APARTMENTS



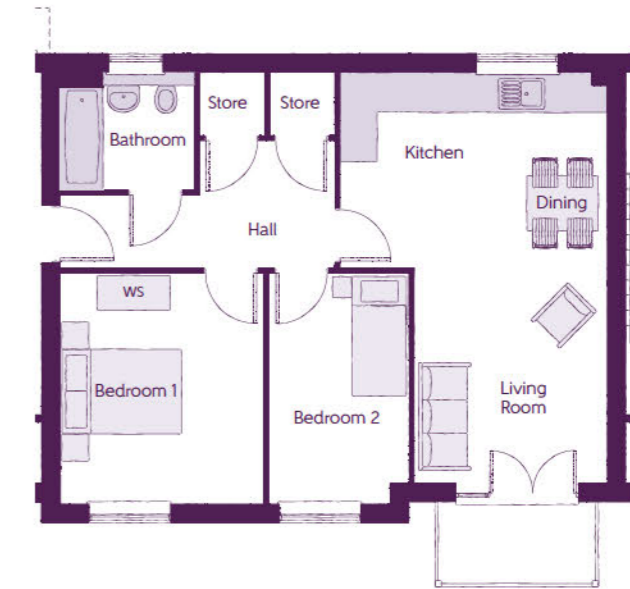
The Kingfisher Apartments

2 BEDROOM APARTMENTS



Plots 387, 389 & 391 (Ground floor shown)

Kitchen/Living/Dining	3.82m x 6.81m (max) (max)	12'6" x 22'4" (max) (max)
Bedroom 1	3.61m x 3.49m (max) (max)	11'10" x 11'5" (max) (max)
Bedroom 2	2.87m x 3.39m (max) (max)	9'5" x 11'1" (max) (max)
Bathroom	2.22m x 1.97m	7'3" x 6'5"

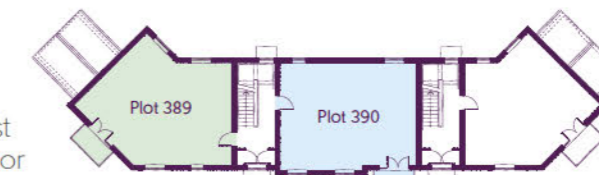


Plots 388, 390 & 392 (Ground floor shown)

Kitchen/Living/Dining	4.41m x 6.46m (max) (max)	14'6" x 21'2" (max) (max)
Bedroom 1	3.38m x 3.83m (max) (max)	11'1" x 12'7" (max) (max)
Bedroom 2	2.32m x 3.49m (max) (max)	7'7" x 11'5" (max) (max)
Bathroom	2.23m x 1.97m	7'4" x 6'5"



Ground Floor



First Floor



Second Floor

Furniture arrangements are for illustrative purposes only. Items are not included, nor to scale.

WS - Wardrobe Space (suggestion only, wardrobe not included)

The items shown in this key may be subject to change, and positions could vary from those indicated on this floorplan. Please refer to Sales Advisor for details of your selected plot. Computer generated image shown overleaf. External finishes, landscaping and configuration may vary from plot to plot. Please refer to Sales Advisor for further details. All dimensions are approximate and should not be used for carpet sizes, appliance spaces or furniture. We operate a policy of continuous improvement and individual features such as kitchen and bathroom layouts, doors, windows, garages and elevational treatments may vary from time to time. Consequently these particulars should be treated as general guidance only and do not constitute a contract, part of a contract or a warranty.



ashberrymhomes.co.uk

The Shenley Apartments

PLOTS 417 - 422

1 BEDROOM APARTMENTS



The Shenley Apartments

1 BEDROOM APARTMENTS



Plots 417, 418, 419, 420, 421 & 422 (Ground floor shown)

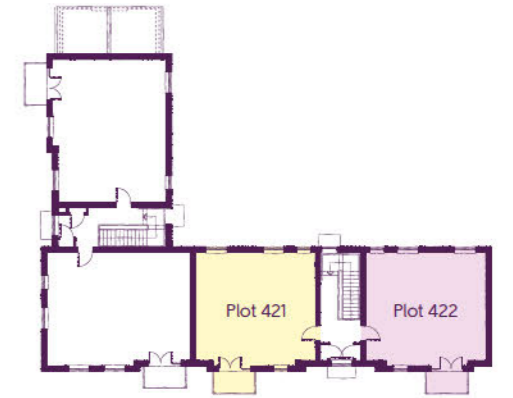
Kitchen	3.30m x 2.88m	10'10" x 9'5"
Living/Dining	3.98m x 4.22m (max) (max)	13'1" x 13'10" (max) (max)
Bedroom	4.20m x 3.83m (max) (max)	13'9" x 12'7" (max) (max)
Bathroom	2.22m x 1.97m	7'3" x 6'5"

Plots 418, 420 & 422 are handed from shown.

WS - Wardrobe Space (suggestion only, wardrobe not included)

Furniture arrangements are for illustrative purposes only. Items are not included, nor to scale.

The items shown in this key may be subject to change, and positions could vary from those indicated on this floorplan. Please refer to Sales Advisor for details of your selected plot. Computer generated image shown overleaf. External finishes, landscaping and configuration may vary from plot to plot. Please refer to Sales Advisor for further details. All dimensions are approximate and should not be used for carpet sizes, appliance spaces or furniture. We operate a policy of continuous improvement and individual features such as kitchen and bathroom layouts, doors, windows, garages and elevational treatments may vary from time to time. Consequently these particulars should be treated as general guidance only and do not constitute a contract, part of a contract or a warranty.



Second Floor



First Floor



Ground Floor



Apartment Specification



It's the little things that make a house your home

Add your own Personal Touch with our optional selection of finishes and fittings.

From upgrading our standard fittings to adding additional items, you can make your new home as individual as you are.

Choose from our range of Personal Touch options:

Kitchens

- Integrated or freestanding washer/dryer
- Integrated fridge/freezer
- Integrated or freestanding dishwasher
- Integrated or freestanding washing machine
- Upgrade to composite worktops
- Double oven
- Upgrade hob
- Integrated microwave

Flooring

- Choose from carpets, vinyl or laminate

Tiling

- Full and half height tiling
- Comprehensive upgrade options

Plumbing

- Heated towel rail

Security

- Intruder alarms
- Security lights

Electrical

- Additional sockets
- Additional switches
- Chrome sockets
- Chrome switches
- Under-unit lighting
- Shaver socket
- Recessed lighting
- BT and TV points

Miscellaneous

- Turf
- Wardrobes

Although we make every effort to ensure that as many Ashberry Personal Touch choices as possible are available to you, not every development offers all the range shown above. Therefore we recommend that you consult our Sales Advisor.



FINISHES		1 Bedroom Apartments	2 Bedroom Apartments
Entrance Doors	Pre Finished Fire Rated Solid Core Door	●	●
Ceilings	Crown White Matt Emulsion	●	●
Walls	Crown White Matt Emulsion	●	●
Window Cills	White Gloss MDF	●	●
Skirting	White Gloss 94x14 MDF Grooved & Chamfered	●	●
Architrave	White Gloss 69x18 MDF Grooved & Chamfered	●	●
Internal Doors	White Pre Finished Ladder Internal Doors	●	●
Ironmongery	Satin CSL1192 Door Furniture	●	●

KITCHEN		1 Bedroom Apartments	2 Bedroom Apartments
Carcass	Premium Grade 18mm thk Colour Matched Carcass	●	●
Frontals	Bellway Band B options †††	●	●
Units	Frontal Matching Table Ends	●	●
Worktops	40mm Square Edge Worktops with upstand	●	●
Kitchen Sink	Rangemaster Aria Single Bowl SS Sink & Aquamono Tap (inc Sink Liner)	●	●
Appliances Oven	Zanussi Single Oven ZOB343X	●	●
Appliances Hob	Zanussi 4 Burner Gas Hob ZGH62414XS & SS Splashback	●	●
Appliances Extractor	Cooker Hood Extractor LFC316X	●	●
Appliance Dishwasher	Removeable Unit 450 (inc Feed & Waste) **	●	●
Appliance Washing Machine	Washing Machine Space Only (inc Feed & Waste)	●	●

WET ROOMS		1 Bedroom Apartments	2 Bedroom Apartments
Bathroom - WC	ROCA DEBBA WC with Concealed Cistern & PL1 Flush Plate †††	●	●
Bathroom - Basin	Roca Debba 520 Semi Recessed WHB no Pedestal M4(2)	●	●
Bathroom - Bath	Roca OSLO Acrylic Bath & Rigid Bath Panel	●	●
Bathroom - Brassware	Bristan FRENZY Chrome Bath & Basin Mixer Taps	●	●
Bathroom - Shower	Over Bath Mira MINIMAL Single Thermostatic Shower ††	●	●
Bathroom - Tiling	1/2 Height Tiling (Band 2) to Wet Walls with Box Edged Chrome Trim * †	●	●

MECHANICAL		1 Bedroom Apartments	2 Bedroom Apartments
Boiler	Ideal LOGIC Combination Boiler (Cb) ***	●	●
Controls	Google Nest 3RD Gen Dual Zone Learning Thermostat	●	●
Radiators	Stelrad Compact Steel Panel Radiators with Grilles	●	●
Ventilation	Window Trickle Ventilators with Mechanical Extract Fans (system 3) dMEV	●	●

ELECTRICS		1 Bedroom Apartments	2 Bedroom Apartments
Safety - Heat	Heat Detector DET ^	●	●
Communications - Access	Video Entry System	●	●
Home Working	Dedicated Power, USB & Data Points	●	●
Smart Home	Google Nest Hub 2nd Generation (GA01892/GB)	●	●
Safety - Fire	Optical Smoke Detectors LD2 D2 DET	●	●
Safety - Carbon	Mains Wired Carbon Monoxide Detector - Appleby	●	●
Consumer Unit	Wylex Consumer Unit	●	●

ELECTRICS		1 Bedroom Apartments	2 Bedroom Apartments
Sockets & Switches	Electrium CASA White Fittings	●	●
USB Locations	Kitchen, Living Room & Bedroom 1 ONLY	●	●
Shaver / Toothbrush Point	Bathroom ONLY	●	●
Lighting	Pendant Fitting to Habitable Rooms	●	●
Lighting - Kitchen	White Recessed Spot Lights	●	●
Lighting - Kitchen Under Unit	1st Fix Wiring Only	●	●
Lighting - Bathroom & En-Suites	White Recessed Spot Lights	●	●
Communications - TV	TV Point to Living Room & Bedroom 1	●	●
Communications - Voice	Telephone Point to Living Room	●	●
Communications - Data	Cat 6 Network Point to Living Room & Bedroom 1	●	●
Communications - Satellite	Dual Connection Satellite Points to Living Room	●	●
Broadband	Ultrafast Fibre Connectivity Openreach	●	●

EXTERNALS & MISC		1 Bedroom Apartments	2 Bedroom Apartments
Shared Parking Areas	Bitmac Black ‡	●	●
Balcony	Balcony ^	●	●
Build Method	Masonry ††	●	●

* full height around bath where shower provided as standard

** at build stage

*** housetype dependent on particular 4 bed housetypes - liaise with Sales Advisor

† full height to shower enclosure

†† inc MIRA bath screen 1.1863.004

††† inc soft close mechanism seat

‡ plot dependent

‡‡ plot specific, refer site layout

‡‡‡ soft close mechanism to doors & drawers

^ where shown on layouts

Information correct at time of going to print. In the event of product discontinuation or issues with stock availability Ashberry will always fit a suitable alternative.